

STYLI AND ACCESSORIES FOR COORDINATE MEASURING MACHINES





STYLI AND ACCESSORIES

EXCELLENT PRODUCTS FOR OUTSTANDING MEASUREMENT RESULTS

To give production more leeway in to utilise tolerances, it is essential that manufacturing measurement technology and quality assurance systems use methods with the lowest possible measurement uncertainty. Measurement uncertainty is often determined by the smallest components in the measuring system, such as the stylus configuration. Selecting suitable components to create the stylus configuration is essential to ensure absolute reliability and precision. To meet maximum precision and quality requirements, Hexagon Manufacturing Intelligence probing system components are manufactured to the highest standards. Thanks to the different types, materials, sizes and connectors, Hexagon probing system components can be used with any kind of probe head and sensors used on coordinate measuring machines (CMMs), 3D laser trackers, portable measuring arms and probes for machine tools.

Every application is different, which is why Hexagon offers a wide range of different types of stylus components and accessories. From extensions to adapters, from rotary to swivel joints, Hexagon offers the most suitable accessories for even the most challenging applications.

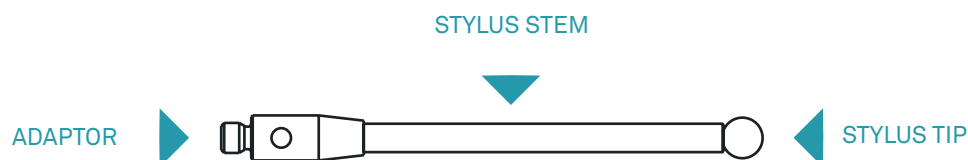
WHAT IS A STYLUS?

As important part of the measuring system, the stylus is in direct contact with the part during measurement. The influence on the accuracy of the results should not be underestimated .

This is why the stylus is subject to the highest quality levels in terms of stiffness and temperature stability, depending on the measuring task. The stylus contacts the part and the sensor generates a measuring signal which is used to determine the geometric position of the feature in X, Y and Z coordinates. The feature information is transferred to metrology software for further processing.

Touch trigger probes, used on both CMMs and machine tools, capture single points. Scanning sensors continuously capture points as long as the stylus is in contact with the part while the CMM is moving.

Styli are generally made up of a stylus tip, a stylus stem and a stylus adaptor.



STYLI TYPES

FIND THE PERFECT STYLUS FOR EACH APPLICATION

STRAIGHT STYLI

Straight Styli are the most common type used in the metrology industry, due to their flexibility. Depending on the application, different materials for spheres and stems are available.



DISC STYLI

This type of stylus is made of a section of a sphere and is often used to measure recesses and grooves.



STAR STYLI

A star configuration is made of multiple styli for maximum flexibility. It can also be used to significantly reduce the number of tool changes during the measurement cycle. Any number of styli can be combined to create a star configuration. Such configurations are typically used to measure rotational symmetrical toothed parts such as gears.



CYLINDRICAL STYLI

Cylindrical styli have, compared to other styli, a larger surface area and are used to capture thin walled parts reliably.



HOLLOW BALL STYLI

This type of stylus is used for measuring deep holes and rough surfaces. By hollowing out the sphere, weight is reduced compared to a solid sphere.



THE STYLUS TIP

HEART OF THE TOOL

The sphere is attached to the stem and is the functional feature of the configuration. Regardless of the application, even the smallest change of the stylus shape can have a significant impact on the measurement result and therefore a direct influence on process control. Styli predominantly have a ball. But disk, cylinder and hemispherical styli are also used, depending on the application.

The quality and suitability of the stylus are generally determined by two criteria. Firstly, the shape deviation must be kept to a minimum in order to achieve consistently precise results in all directions. Secondly, the stylus material should be selected to suit the

materials and surface properties in order to avoid surface degradation and ensure long life.

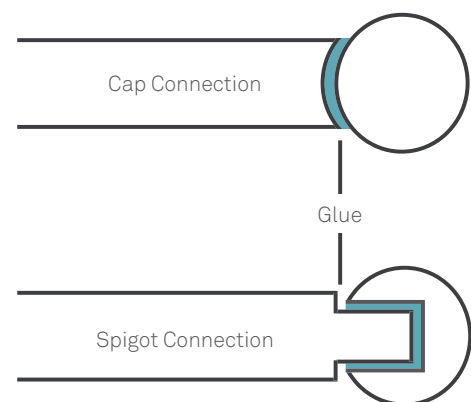
The quality of the spheres is defined by their maximum permissible form deviation.

Selecting a suitable stylus according to the application and workpiece material is strongly advised. The following stylus materials are available and can be selected according to the material and the surface properties of the part.

There are two ways to join the stylus tip and its shaft. The tip can either be glued into a spherical calotte on the end of the shaft, or a pin on the stem locates a hole in the stylus tip and is glued in.



| Grade | Ø Form Deviation | Roundness |
|-------|------------------|-----------|
| 20 | ± 0.50 µm | 0.50 µm |
| 16 | ± 0.40 µm | 0.40 µm |
| 10 | ± 0.25 µm | 0.25 µm |
| 5 | ± 0.13 µm | 0.13 µm |
| 3 | ± 0.08 µm | 0.08 µm |

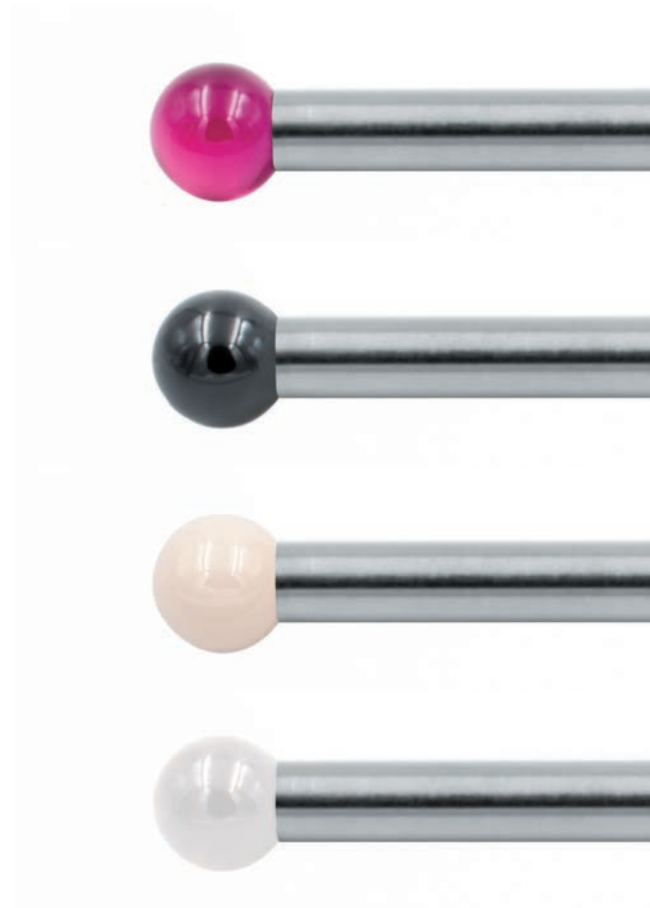


Ruby is the most widely used material for styli spheres due to its inexpensive availability, price and quality. It is the standard choice for most applications and is an extremely hard material, which tends, however, to cause material build-up when combined with certain materials such as aluminium.

Silicon nitride has similar properties to ruby in terms of the interaction between the stylus and the part surface, but it does not tend to form material build-up when measuring aluminium parts. Silicon nitride styli are more wear-resistant than ruby styli.

Ceramic is primarily used for long or heavy styli and disc styli. Due to its resistance to wear, ceramic styli are often used for scanning extremely rough surfaces, such as cast iron.

Diamond is the hardest material available and is perfect for scanning aluminium parts, as it does not create material build-up. Diamond styli are either solid or coated and have maximum wear resistance.



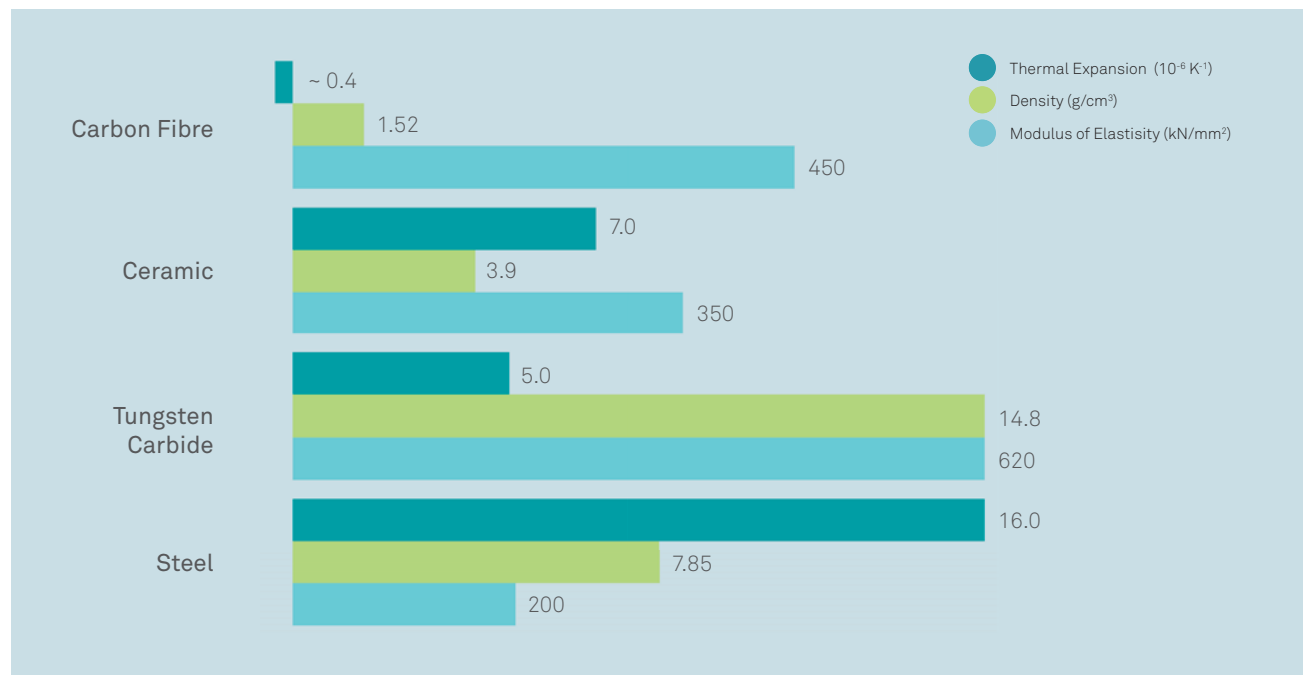
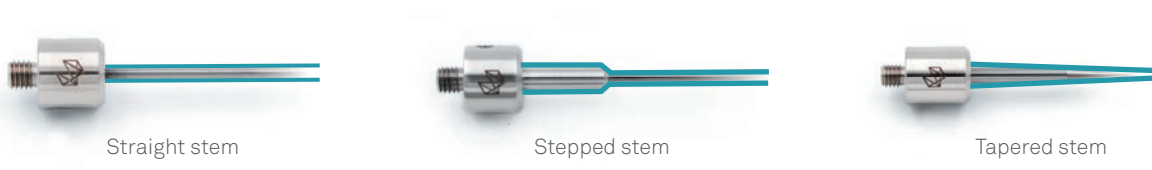
THE STYLUS SHAFT

CONNECTING THE TIP TO THE ADAPTOR

The shaft is the physical link between the stylus and its adaptor. Its job is to transfer the moment generated by the stylus contacting the part without loss. The physical and geometrical properties of the shaft are important.

The geometric properties, such as length and diameter, determine whether a feature can be

accessed by the stylus or not. Different types of shafts are available, among others, straight, tapered and stepped shafts. The shaft geometry plays a key role in avoiding “shanking” on the part, in particular with small spheres. The most important physical properties of the shaft are weight, stiffness and temperature behaviour.



THE STYLUS ADAPTOR CONNECTOR TO THE SENSOR

This is the interface between the stylus stem and the sensor. The stylus adaptor is usually made of either titanium, hard metal or stainless steel. The adaptor and the stylus shaft are either glued, welded or shrunk on. The adaptor utilises a connecting thread, M3 and M5 threads are generally used for measuring or scanning sensors, and M2 and M3 threads are used for touch trigger sensors. Thread adapters or extra stylus holders can be used to combine different threads or use styli with plain shafts.

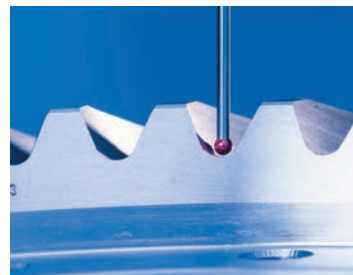
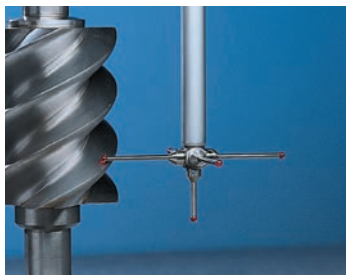
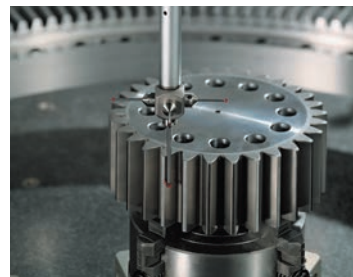
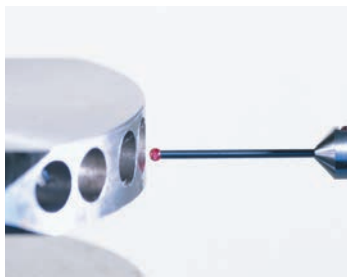
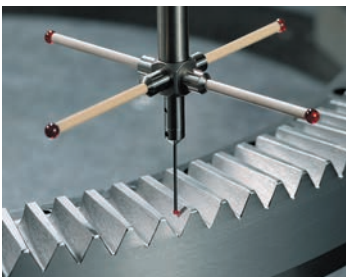


STYLI ACCESSORIES

A COMPLETE RANGE FOR ALL APPLICATIONS

The Hexagon range of styli and accessories provides the user with flexible and individual probing configurations to measure complex geometries and difficult to reach characteristics. Besides styli, accessories also include cubes, extensions, swivels, rotary joints, stylus holders and adapters. Using accessories, styli configurations can be created and customised to suit the measuring task, part and application.

- Cubes can be used to create application-specific configurations simply and easily. Up to five styli can be mounted on one cube.
- With rotary joints and swivel elements, styli can be orientated to ensure an optimal probing direction.
- Stylus holders are the link between sensor and stylus. They are available in different variations with defined angular orientations in order to minimise the number of time-intensive stylus changes.
- Adapters can be used to adapt the stylus to other threads or accessories
- Extensions are used to reach features that the stylus cannot access. As is the case when selecting a stylus, it is crucial to select a material, whose properties are similar to those of the stylus shafts.



IMPORTANT TIPS FOR BEST RESULTS

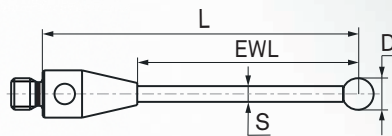
- When putting together the stylus configuration, it is vital to observe the permissible total weight for the sensor. This can vary considerably between different sensors.
- Styli configurations should be kept as short as possible. This minimises flexing, which in turn reduces variation in results.
- Styli configurations should be kept as short as possible. This minimises flexing, which in turn reduces variation in results.
- The more joints, the more flexible the stylus configuration. The number of components should be kept to a minimum to ensure maximum stiffness.
- Always ensure that the components in the configuration are properly assembled.
- For large temperature gradients, materials should be used that are temperature-stable. For long extensions, we only recommend carbon fibre components.
- Worn or mechanically deformed or damaged styli should be replaced immediately, in order to prevent measurement errors.
- Regularly check the contact surface of the individual accessories for damage in order to ensure maximum engagement between components.
- Spheres should be cleaned frequently, in order to ensure repeatable and accurate measurements.
- For many applications, it makes sense to align the styli using the part feature to be measured. If it is not possible, configurations can be set up using either hand tools or a stylus presetter.
- Don't forget: When chasing microns, the smallest details make the biggest difference.

ABBREVIATIONS

MEANING IN DESCRIPTION AND DRAWINGS

Material

| | |
|----|------------------|
| AL | Aluminium |
| CE | Ceramic |
| CF | Carbon Fibre |
| DA | Dispal® |
| DC | Diamond Coated |
| DS | Diamond Sphere |
| R | Ruby |
| SN | Silicon Nitride |
| SS | Stainless Steel |
| ST | Steel |
| TC | Tungsten Carbide |
| TI | Titanium |



Technical

| | |
|-----|-------------------------------------|
| L | Length [mm] |
| D | Diameter [mm] |
| D1 | Extensions End Pieces Diameter [mm] |
| S | Stem Diameter [mm] |
| SP | Span [mm] |
| EWL | Effective Working Length [mm] |
| W | Weight [g] |
| QTY | Quantity |


The illustrations are merely included as a visualization aid and are not true to scale.
Errors and modifications subject to change.



TOUCH TRIGGER

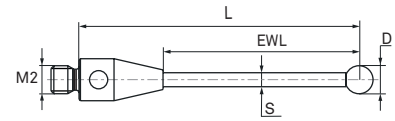
STYLI AND ACCESSORIES

| | |
|---------------------------------|-------------|
| M2 Styli and Accessories | Page |
| Styli | 14 |
| Stylus Extensions | 19 |
| Stylus Accessories | 20 |
| Stylus Kits | 21 |
| M3 Styli and Accessories | |
| Styli | 26 |
| Stylus Extensions | 28 |
| Stylus Accessories | 29 |
| Stylus Kits | 30 |
| M4 Styli and Accessories | |
| Styli | 32 |
| Stylus Extensions | 32 |
| Stylus Accessories | 32 |
| Tools | |
| Tools | 33 |
| Cross Reference Numbers | |
| Renishaw Hexagon | 34 |



M2-STYLI WITH RUBY BALL

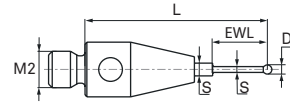
Stem: Tungsten Carbide or Stainless Steel



| Part No. | Material | L | D | S | EWL | W |
|----------|----------|-------|-----|------|-------|-----|
| 03969268 | R / TC | 10.00 | 0.3 | 0.2 | 2.00 | 0.3 |
| 03969267 | R / TC | 10.00 | 0.7 | 0.5 | 4.00 | 0.3 |
| 03969441 | R / TC | 10.00 | 1.0 | 0.8 | 4.80 | 0.3 |
| 03969269 | R / TC | 20.00 | 0.5 | 0.3 | 7.00 | 0.5 |
| 03969438 | R / TC | 20.00 | 0.7 | 0.5 | 14.80 | 0.3 |
| 03969271 | R / TC | 20.00 | 1.0 | 0.8 | 12.50 | 0.4 |
| 03969221 | R / TC | 20.00 | 1.0 | 0.7 | 7.00 | 0.5 |
| 03969272 | R / TC | 20.00 | 1.5 | 1.0 | 12.50 | 0.5 |
| 03969222 | R / TC | 20.00 | 2.0 | 1.0 | 15.00 | 0.4 |
| 03969439 | R / TC | 20.00 | 3.0 | 1.5 | 20.00 | 0.7 |
| 03969440 | R / TC | 20.00 | 4.0 | 2.0 | 20.00 | 1.1 |
| 03969430 | R / TC | 20.00 | 5.0 | 2.0 | 20.00 | 1.3 |
| 03969259 | R / TC | 27.00 | 1.0 | 0.7 | 20.50 | 0.4 |
| 03969261 | R / TC | 30.00 | 1.5 | 1.0 | 25.00 | 0.6 |
| 03969262 | R / TC | 30.00 | 2.0 | 1.5 | 25.00 | 0.9 |
| 03969263 | R / TC | 30.00 | 3.0 | 2.0 | 25.00 | 1.5 |
| 03969429 | R / TC | 30.00 | 4.0 | 2.0 | 30.00 | 1.5 |
| 03969282 | R / TC | 40.00 | 2.0 | 1.5 | 35.00 | 1.2 |
| 03969283 | R / TC | 40.00 | 3.0 | 2.0 | 35.00 | 1.9 |
| 03969284 | R / TC | 40.00 | 4.0 | 2.0 | 40.00 | 2.0 |
| 03969293 | R / TC | 50.00 | 3.0 | 2.0 | 42.50 | 2.4 |
| 03969294 | R / TC | 50.00 | 4.0 | 2.0 | 50.00 | 2.4 |
| 03969295 | R / TC | 50.00 | 5.0 | 2.5 | 50.00 | 3.8 |
| 03969201 | R / SS | 10.00 | 1.0 | 0.7 | 4.50 | 0.2 |
| 03969428 | R / SS | 10.00 | 1.5 | 0.7 | 5.70 | 0.2 |
| 03969202 | R / SS | 10.00 | 2.0 | 1.1 | 6.00 | 0.2 |
| 03969225 | R / SS | 10.00 | 2.5 | 1.0 | 6.00 | 0.3 |
| 03969203 | R / SS | 10.00 | 3.0 | 1.5 | 7.50 | 0.3 |
| 03969204 | R / SS | 10.00 | 4.0 | 1.65 | 10.00 | 0.4 |
| 03969205 | R / SS | 10.00 | 5.0 | 2.5 | 10.00 | 0.7 |
| 03969206 | R / SS | 10.00 | 6.0 | 2.7 | 10.00 | 0.8 |
| 03969208 | R / SS | 11.00 | 8.0 | 2.7 | 11.00 | 1.4 |
| 03969212 | R / SS | 20.00 | 2.0 | 1.3 | 14.00 | 0.4 |
| 03969226 | R / SS | 20.00 | 2.5 | 1.4 | 14.00 | 0.5 |
| 03969213 | R / SS | 20.00 | 3.0 | 1.5 | 17.50 | 0.5 |
| 03969214 | R / SS | 20.00 | 4.0 | 2.0 | 20.00 | 0.8 |

M2-STYLUS WITH RUBY BALL

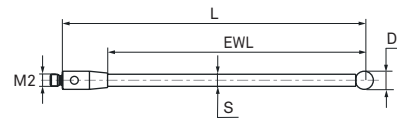
Stem: Tungsten Carbide (stepped)



| Part No. | Material | L | D | S | EWL | W |
|----------|----------|-------|-----|------------|------|-----|
| 03969220 | R / TC | 10.00 | 0.5 | 0.32 / 0.7 | 3.00 | 0.3 |

M2-STYLI WITH RUBY BALL

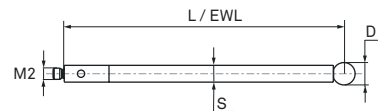
Stem: Ceramic



| Part No. | Material | L | D | S | EWL | W |
|----------|----------|-------|-----|-----|-------|-----|
| 03969442 | R / CE | 30.00 | 4.0 | 2.0 | 30.00 | 0.7 |
| 03969223 | R / CE | 50.00 | 3.0 | 2.0 | 42.50 | 0.8 |
| 03969224 | R / CE | 50.00 | 4.0 | 2.0 | 50.00 | 0.9 |

M2-STYLI WITH RUBY BALL

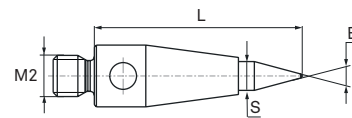
Stem: Carbon Fibre



| Part No. | Material | L | D | S | EWL | W |
|----------|----------|-------|-----|-----|-------|-----|
| 03969286 | R / CF | 30.00 | 6.0 | 3.0 | 30.00 | 1.2 |
| 03969260 | R / CF | 50.00 | 4.0 | 3.0 | 50.00 | 0.8 |
| 03969425 | R / CF | 50.00 | 5.0 | 3.0 | 50.00 | 1.0 |
| 03969276 | R / CF | 50.00 | 6.0 | 3.0 | 50.00 | 1.4 |
| 03969424 | R / CF | 75.00 | 4.0 | 2.0 | 75.00 | 0.7 |

M2-POINTER STYLUS

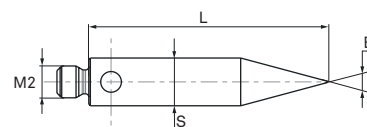
Stylus Tip: Tungsten Carbide



| Part No. | Material | L | S | B | W |
|----------|----------|-------|-----|-----|-----|
| 03969141 | TC | 10.00 | 1.4 | 30° | 0.4 |

M2-POINTER STYLUS

Material: Stainless Steel

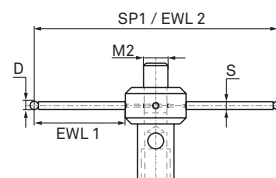


| Part No. | Material | L | S | B | W |
|----------|----------|-------|-----|-----|-----|
| 03969200 | SS | 15.00 | 3.0 | 30° | 0.6 |

M2-STAR STYLI 4-WAY

Ball: Ruby

Stem: Tungsten Carbide

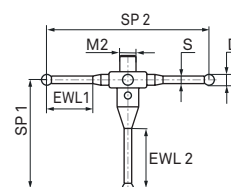


| Part No. | Material | SP 1/2 | D | S | EWL 1/2 | W |
|----------|----------|----------|-----|-----|--------------|-----|
| 03969210 | R / TC | 20.0 / - | 0.5 | 0.3 | 7.50 / 20.00 | 0.7 |
| 03969422 | R / TC | 10.0 / - | 0.5 | 0.3 | 2.50 / 10.00 | 0.6 |
| 03969423 | R / TC | 20.0 / - | 1.0 | 0.7 | 7.50 / 20.00 | 0.8 |

M2-STAR STYLI 5-WAY

Ball: Ruby

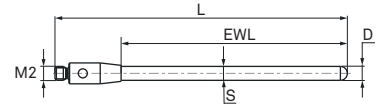
Stem: Stainless Steel



| Part No. | Material | SP 1/2 | D | S | EWL 1/2 | W |
|----------|----------|-------------|-----|-----|--------------|-----|
| 03969081 | R / SS | 18.0 / 20.0 | 2.0 | 1.4 | 4.50 / 10.00 | 1.4 |
| 03969082 | R / SS | 18.0 / 30.0 | 2.0 | 1.4 | 9.00 / 10.00 | 1.7 |
| 03969055 | R / SS | 20.0 / 20.0 | 2.0 | 1.4 | 4.50 / 10.00 | 1.5 |
| 03969056 | R / SS | 20.0 / 30.0 | 2.0 | 1.4 | 9.00 / 10.00 | 1.7 |

M2-SPHERICAL CYLINDER STYLI

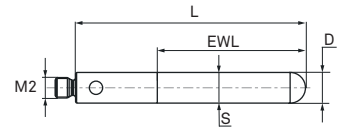
Stylus Tip: Tungsten Carbide



| Part No. | Material | L | D | S | EWL | W |
|----------|----------|-------|-----|-----|-------|-----|
| 03969277 | TC | 15.30 | 0.5 | 0.5 | 7.80 | 0.3 |
| 03969279 | TC | 16.00 | 2.0 | 2.0 | 8.50 | 0.8 |
| 03969278 | TC | 35.50 | 1.0 | 1.0 | 29.80 | 0.6 |
| 03969280 | TC | 40.00 | 2.0 | 2.0 | 32.50 | 1.9 |

M2-SPHERICAL CYLINDER STYLUS

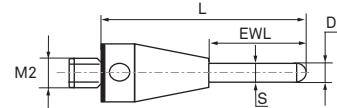
Stylus Tip: Tungsten Carbide



| Part No. | Material | L | D | S | EWL | W |
|----------|----------|-------|-----|-----|-------|-----|
| 03969281 | TC | 22.50 | 3.0 | 3.0 | 14.50 | 2.0 |

M2-SPHERICAL CYLINDER STYLUS

Stylus Tip: Ruby

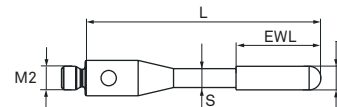


| Part No. | Material | L | D | S | EWL | W |
|----------|----------|-------|-----|-----|------|-----|
| 03969445 | R / SS | 15.00 | 1.0 | 1.0 | 6.50 | 0.3 |

M2-SPHERICAL CYLINDER STYLUS

Stylus Tip: Ruby

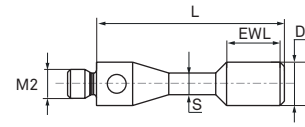
Stem: Tungsten Carbide



| Part No. | Material | L | D | S | EWL | W |
|----------|----------|-------|-----|-----|------|-----|
| 03969292 | R / TC | 20.00 | 2.0 | 1.6 | 7.20 | 0.6 |

M2-CYLINDER STYLI

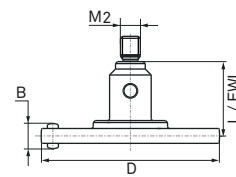
Material: Stainless Steel



| Part No. | Material | L | D | S | EWL | W |
|----------|----------|-------|-----|-----|------|-----|
| 03969251 | SS | 11.00 | 1.5 | 1.0 | 1.50 | 0.4 |
| 03969253 | SS | 13.00 | 3.0 | 1.5 | 3.70 | 0.5 |

M2-DISC STYLUS

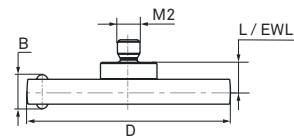
Disc: Silver Steel



| Part No. | Material | L | D | B | EWL | W |
|----------|----------|------|------|-----|------|-----|
| 03969242 | SV / SS | 7.50 | 18.0 | 2.5 | 7.50 | 2.9 |

M2-DISC STYLUS

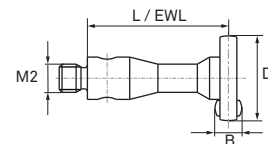
Disc: Ceramic



| Part No. | Material | L | D | B | EWL | W |
|----------|----------|------|------|-----|------|-----|
| 03969243 | CE / SS | 2.60 | 18.0 | 3.0 | 2.60 | 2.4 |

M2-DISC STYLUS

Disc: Ruby



| Part No. | Material | L | D | B | EWL | W |
|----------|----------|-------|-----|-----|-------|-----|
| 03969241 | R / SS | 10.00 | 6.0 | 2.0 | 10.00 | 0.6 |

M2-HOLLOW BALL STYLUS

Hollow Ball: Ceramic



| Part No. | Material | L | D | EWL | W |
|----------|----------|-------|------|-------|-----|
| 03969218 | CE | 11.00 | 18.0 | 11.00 | 3.7 |

M2-STYLUS EXTENSIONS

Material: Stainless Steel



| Part No. | Material | L | D | D1 | W |
|----------|----------|-------|-----|----|-----|
| 03969230 | SS | 5.00 | 3.0 | - | 0.2 |
| 03969231 | SS | 10.00 | 3.0 | - | 0.4 |
| 03969232 | SS | 20.00 | 3.0 | - | 0.9 |
| 03969233 | SS | 30.00 | 3.0 | - | 1.5 |
| 03969234 | SS | 40.00 | 3.0 | - | 2.1 |

M2-STYLUS EXTENSIONS

Stem: Carbon Fibre

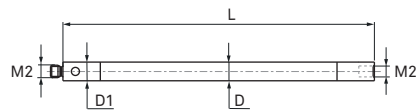
End Pieces: Stainless Steel



| Part No. | Material | L | D | D1 | W |
|----------|----------|-------|-----|-----|-----|
| 03969270 | CF / SS | 40.00 | 3.0 | 3.5 | 1.0 |
| 03969238 | CF / SS | 50.00 | 3.0 | 3.5 | 1.2 |
| 03969239 | CF / SS | 70.00 | 3.0 | 3.5 | 1.4 |
| 03969240 | CF / SS | 90.00 | 3.0 | 3.5 | 1.6 |

M2-STYLUS EXTENSIONS

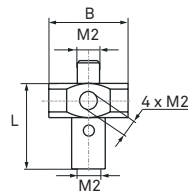
Stem: Ceramic
End Pieces: Stainless Steel



| Part No. | Material | L | D | D1 | W |
|----------|----------|-------|-----|-----|-----|
| 03969246 | CE / SS | 40.00 | 3.0 | 3.0 | 1.2 |
| 03969247 | CE / SS | 50.00 | 3.0 | 3.0 | 1.5 |

M2-STYLUS HOLDER 5-WAY

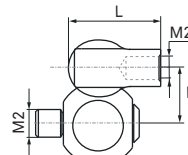
Material: Stainless Steel



| Part No. | Material | L | D | B | W |
|----------|----------|------|---|-----|-----|
| 03969054 | SS | 7.50 | - | 7.0 | 1.0 |

M2-STYLUS KNUCKLE

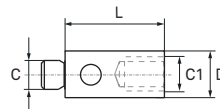
Material: Stainless Steel



| Part No. | Material | L | D | B | W |
|----------|----------|------|---|-----|-----|
| 03969059 | SS | 8.00 | - | 4.5 | 1.6 |

M2/M3-STYLUS ADAPTER

Material: Stainless Steel



| Part No. | Material | L | D | C | C1 | W |
|----------|----------|------|-----|----|----|-----|
| 03969061 | SS | 7.00 | 4.0 | M2 | M3 | 0.4 |

M2-STYLUS KIT NO. 1



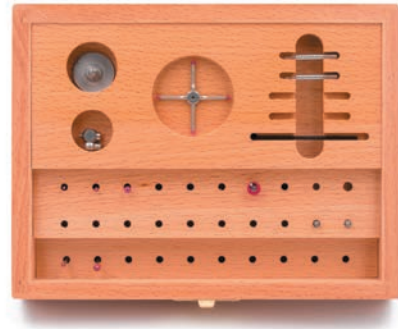
| Part No. | Item Description | Contents | QTY |
|----------|---|----------|-----|
| 03969075 | M2-Stylus Kit No. 1 | | |
| | M2-Stylus (R-3-SS-1.5-L10) | 03969203 | 2 |
| | M2-Stylus (R-4-SS-1.65-L10) | 03969204 | 1 |
| | M2-Stylus (R-6-SS-2.7-L10) | 03969206 | 1 |
| | M2-Stylus (R-2-SS-1.3-L20) | 03969212 | 2 |
| | M2-Stylus (R-3-SS-1.5-L20) | 03969213 | 2 |
| | M2-Stylus (R-4-SS-2-L20) | 03969214 | 1 |
| | M2-Stylus Extension (SS-3-L5) | 03969230 | 2 |
| | M2-Stylus Extension (SS-3-L10) | 03969231 | 2 |
| | M2-Stylus Extension (SS-3-L20) | 03969232 | 2 |
| | M2-Stylus Extension (SS-3-L30) | 03969233 | 2 |
| | M2-Cylinder Stylus (SS-3-SS-1.5-L13) | 03969253 | 1 |
| | M2-Star Stylus 5-way (R-2-SS-1.4-SP18/20) | 03969081 | 1 |
| | M2-Styli Holder 5-way (SS-L7.5) | 03969054 | 1 |
| | M2/M3-Mounting Pin | 03969600 | 1 |
| | Storage Box | | 1 |
| | M2-Stylus (R-1-SS-0.7-L10) | 03969201 | 1 |
| | M2-Stylus (R-2-SS-1.1-L10) | 03969202 | 1 |

M2-STYLUS KIT NO. 2



| Part No. | Item Description | Contents | QTY |
|----------|--------------------------------|----------|-----|
| 03969087 | M2-Stylus Kit No. 2 | | |
| | M2-Stylus (R-1-SS-0.7-L10) | 03969201 | 1 |
| | M2-Stylus (R-2-SS-1.1-L10) | 03969202 | 1 |
| | M2-Stylus (R-3-SS-1.5-L10) | 03969203 | 1 |
| | M2-Stylus (R-4-SS-1.65-L10) | 03969204 | 1 |
| | M2-Stylus Extension (SS-3-L10) | 03969231 | 1 |
| | M2-Stylus Extension (SS-3-L20) | 03969232 | 1 |
| | M2-Stylus Extension (SS-3-L30) | 03969233 | 1 |
| | Plastic Box | | 1 |

M2-STYLUS KIT NO. 3



| Part No. | Item Description | Contents | QTY |
|----------|---|----------|-----|
| 03969063 | M2-Stylus Kit No. 3 | | |
| | M2-Stylus (R-1-SS-0.7-L10) | 03969201 | 1 |
| | M2-Stylus (R-2-SS-1.1-L10) | 03969202 | 1 |
| | M2-Stylus (R-3-SS-1.5-L10) | 03969203 | 1 |
| | M2-Stylus (R-2-SS-1.3-L20) | 03969212 | 1 |
| | M2-Stylus (R-3-SS-1.5-L20) | 03969213 | 1 |
| | M2-Stylus Extension (SS-3-L10) | 03969231 | 2 |
| | M2-Disc Stylus (R-6-SS-L10) | 03969241 | 1 |
| | M2-Disc Stylus (SV-18-SS-L7.5) | 03969242 | 1 |
| | M2-Stylus Knuckle (SS-L8) | 03969059 | 1 |
| | M2-Star Stylus 5-way (R-2-SS-1.4-SP18/30) | 03969082 | 1 |
| | M2/M3-Mounting Pin | 03969600 | 2 |
| | Hexagon Socket Wrench AF1.5 mm | 03969703 | 1 |
| | Storage Box | | 1 |

M2-STYLUS KIT NO. 7



| Part No. | Item Description | Contents | QTY |
|----------|---|----------|-----|
| 03969076 | M2-Stylus Kit No. 7 | | |
| | M2-Stylus (R-1-SS-0.7-L10) | 03969201 | 2 |
| | M2-Stylus (R-2-SS-1.1-L10) | 03969202 | 6 |
| | M2-Stylus (R-3-SS-1.5-L10) | 03969203 | 2 |
| | M2-Stylus (R-4-SS-1.65-L10) | 03969204 | 2 |
| | M2-Stylus (R-2-SS-1.3-L20) | 03969212 | 2 |
| | M2-Stylus (R-3-SS-1.5-L20) | 03969213 | 1 |
| | M2-Stylus (R-4-SS-2-L20) | 03969214 | 1 |
| | M2-Stylus (R-1-TC-0.7-L20) | 03969221 | 1 |
| | M2-Stylus Extension (SS-3-L10) | 03969231 | 2 |
| | M2-Stylus Extension (SS-3-L20) | 03969232 | 1 |
| | M2-Styli Holder 5-way (SS-L7.5) | 03969054 | 1 |
| | M2-Star Stylus 5-way (R-2-SS-1.4-SP18/30) | 03969082 | 1 |
| | M3/M2-Stylus Adapter (SS-L5) | 03969062 | 1 |
| | M2-Stylus Knuckle (SS-L8) | 03969059 | 1 |
| | M2/M3-Mounting Pin | 03969600 | 2 |
| | Hexagon Socket Wrench AF1.5 mm | 03969703 | 1 |
| | Storage Box | | 1 |

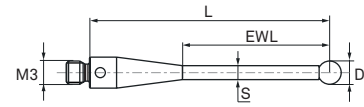
M2-STYLUS KIT NO. 8



| Part No. | Item Description | Contents | QTY |
|----------|---|----------|-----|
| 03969086 | M2-Stylus Kit No. 8 | | |
| | M2-Stylus (R-2-SS-1.1-L10) | 03969202 | 1 |
| | M2-Stylus (R-4-SS-1.65-L10) | 03969204 | 1 |
| | M2-Stylus (R-2-SS-1.3-L20) | 03969212 | 2 |
| | M2-Stylus (R-3-SS-1.5-L20) | 03969213 | 2 |
| | M2-Stylus (R-1-TC-0.7-L20) | 03969221 | 1 |
| | M2-Stylus (R-4-CF-3-L50) | 03969260 | 1 |
| | M2-Stylus Extension (SS-3-L10) | 03969231 | 1 |
| | M2-Stylus Extension (SS-3-L20) | 03969232 | 1 |
| | M2-Stylus Extension (CF-3-SS-3.5-L40) | 03969270 | 1 |
| | M2-Star Stylus 5-way (R-2-SS-1.4-SP18/30) | 03969082 | 1 |
| | M2-Styli Holder 5-way (SS-L7.5) | 03969054 | 1 |
| | M2/M3-Mounting Pin | 03969600 | 2 |
| | M2-Key for Carbon Fibre Extension | 03969701 | 2 |
| | HP-T/HP-TM Probe Tool Key | | 2 |
| | Storage Box | | 1 |

M3-STYLI WITH RUBY BALL

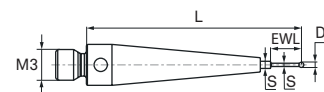
Stem: Tungsten Carbide or Stainless Steel



| Part No. | Material | L | D | S | EWL | W |
|----------|----------|-------|-----|-----|-------|-----|
| 03969431 | R / TC | 20.00 | 1.5 | 1.0 | 11.70 | 0.9 |
| 03969312 | R / TC | 21.00 | 2.0 | 1.0 | 15.00 | 0.7 |
| 03969332 | R / TC | 21.00 | 2.5 | 2.0 | 12.50 | 1.4 |
| 03969432 | R / TC | 30.00 | 1.5 | 1.0 | 21.70 | 1.0 |
| 03969322 | R / TC | 30.00 | 2.0 | 1.5 | 22.50 | 1.1 |
| 03969342 | R / TC | 30.00 | 2.5 | 2.0 | 22.50 | 1.8 |
| 03969313 | R / TC | 30.00 | 3.0 | 2.0 | 22.50 | 1.8 |
| 03969433 | R / TC | 40.00 | 2.0 | 1.0 | 33.90 | 1.1 |
| 03969343 | R / TC | 40.00 | 3.0 | 2.0 | 32.50 | 2.2 |
| 03969434 | R / TC | 40.00 | 4.0 | 2.0 | 40.00 | 2.4 |
| 03969353 | R / TC | 50.00 | 3.0 | 2.0 | 42.50 | 2.7 |
| 03969435 | R / TC | 50.00 | 4.0 | 2.0 | 50.00 | 2.8 |
| 03969436 | R / TC | 50.00 | 5.0 | 2.0 | 50.00 | 2.9 |
| 03969324 | R / SS | 10.00 | 3.0 | 1.5 | 6.00 | 0.5 |
| 03969327 | R / SS | 10.00 | 3.0 | 2.0 | 6.50 | 0.6 |
| 03969326 | R / SS | 10.00 | 6.0 | 2.7 | 10.00 | 1.1 |
| 03969301 | R / SS | 21.00 | 1.0 | 0.7 | 4.00 | 1.0 |
| 03969302 | R / SS | 21.00 | 2.0 | 1.4 | 8.00 | 1.0 |
| 03969303 | R / SS | 21.00 | 3.0 | 1.5 | 12.00 | 0.9 |
| 03969304 | R / SS | 21.00 | 4.0 | 2.5 | 17.00 | 1.3 |
| 03969305 | R / SS | 21.00 | 5.0 | 2.5 | 21.00 | 1.4 |
| 03969333 | R / SS | 31.00 | 3.0 | 1.8 | 22.00 | 1.3 |
| 03969334 | R / SS | 31.00 | 4.0 | 2.5 | 27.00 | 1.8 |

M3-STYLUS WITH RUBY BALL

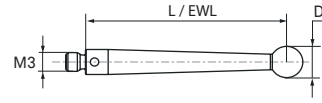
Stem: Tungsten Carbide (stepped)



| Part No. | Material | L | D | S | EWL | W |
|----------|----------|-------|-----|------------|------|-----|
| 03969310 | R / TC | 21.00 | 0.5 | 0.32 / 0.7 | 3.00 | 1.0 |

M3-STYLUS WITH RUBY BALL

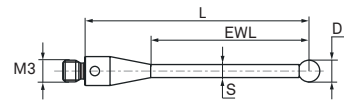
Stem: Stainless Steel (tapered)



| Part No. | Material | L | D | S | EWL | W |
|----------|----------|-------|-----|---|-------|-----|
| 03969335 | R / SS | 31.00 | 5.0 | - | 31.00 | 2.3 |

M3-STYLUS WITH RUBY BALL

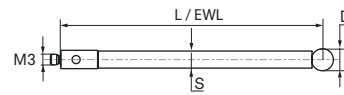
Stem: Ceramic



| Part No. | Material | L | D | S | EWL | W |
|----------|----------|-------|-----|-----|-------|-----|
| 03969437 | R / CE | 50.00 | 3.0 | 1.5 | 45.30 | 1.0 |

M3-STYLUS WITH RUBY BALL

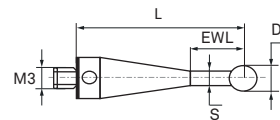
Stem: Carbon Fibre



| Part No. | Material | L | D | S | EWL | W |
|----------|----------|-------|-----|-----|-------|-----|
| 03969443 | R / CF | 72.00 | 6.0 | 4.0 | 72.00 | 2.2 |
| 03969450 | R / CF | 75.00 | 6.0 | 4.0 | 75.00 | 2.3 |

M3-STYLI WITH SILICON NITRIDE BALL

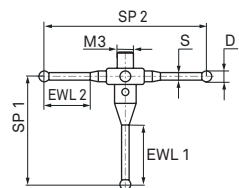
Stem: Tungsten Carbide



| Part No. | Material | L | D | S | EWL | W |
|----------|----------|-------|-----|-----|-------|-----|
| 03969421 | SN / TC | 21.00 | 2.0 | 1.4 | 10.00 | 1.1 |
| 03969420 | SN / TC | 21.50 | 1.0 | 0.7 | 10.00 | 1.0 |

M3-STAR STYLI 5-WAY

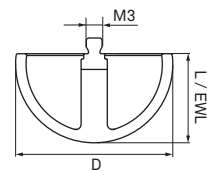
Ball: Ruby
Stem: Stainless Steel



| Part No. | Material | SP 1/2 | D | S | EWL 1/2 | W |
|----------|----------|-------------|-----|-----|--------------|-----|
| 03969083 | R / SS | 18.0 / 20.0 | 2.0 | 1.4 | 9.50 / 4.50 | 2.1 |
| 03969057 | R / SS | 20.0 / 20.0 | 2.0 | 1.4 | 11.00 / 4.50 | 2.1 |
| 03969084 | R / SS | 18.0 / 30.0 | 2.0 | 1.4 | 9.50 / 9.00 | 2.4 |
| 03969058 | R / SS | 20.0 / 30.0 | 2.0 | 1.4 | 11.00 / 9.00 | 2.4 |

M3-HOLLOW BALL STYLUS

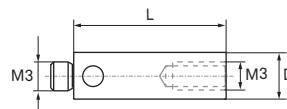
Hollow Ball: Ceramic



| Part No. | Material | L | D | EWL | W |
|----------|----------|-------|------|-------|------|
| 03969330 | CE | 17.00 | 30.0 | 17.00 | 12.9 |

M3-STYLUS EXTENSIONS

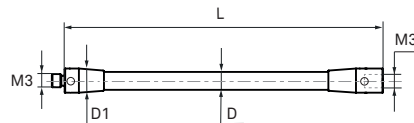
Material: Stainless Steel



| Part No. | Material | L | D | D1 | W |
|----------|----------|-------|-----|----|-----|
| 03969044 | SS | 10.00 | 4.0 | - | 0.7 |
| 03969045 | SS | 20.00 | 4.0 | - | 1.8 |
| 03969320 | SS | 35.00 | 4.0 | - | 3.1 |

M3-STYLUS EXTENSIONS

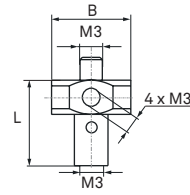
Stem: Carbon Fibre
End Pieces: Dispal®



| Part No. | Material | L | D | D1 | W |
|----------|----------|--------|-----|-----|-----|
| 03969446 | CF / DA | 75.00 | 4.0 | 5.5 | 2.1 |
| 03969447 | CF / DA | 100.00 | 4.0 | 5.5 | 2.6 |

M3-STYLUS HOLDER 5-WAY

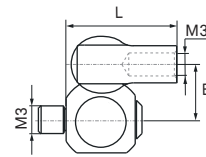
Material: Stainless Steel



| Part No. | Material | L | D | B | W |
|----------|----------|-------|---|---|-----|
| 03969046 | SS | 13.00 | - | - | 3.5 |

M3-STYLUS KNUCKLE

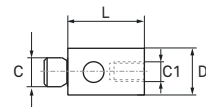
Material: Stainless Steel



| Part No. | Material | L | D | B | W |
|----------|----------|-------|---|-----|-----|
| 03969060 | SS | 12.00 | - | 6.0 | 3.6 |

M3/M2-STYLUS ADAPTER

Material: Stainless Steel



| Part No. | Material | L | D | C | C1 | W |
|----------|----------|------|-----|----|----|-----|
| 03969062 | SS | 5.00 | 4.0 | M3 | M2 | 0.5 |

M3-STYLUS KIT NO. 1



| Part No. | Item Description | Contents | QTY |
|----------|--------------------------------|----------|-----|
| 03969101 | M3-Stylus Kit No. 1 | | |
| | M3-Stylus (R-2-SS-1.4-L21) | 03969302 | 1 |
| | M3-Stylus (R-3-SS-1.5-L21) | 03969303 | 4 |
| | M3-Stylus (R-4-SS-2.5-L21) | 03969304 | 1 |
| | M3-Stylus Extension (SS-4-L10) | 03969044 | 2 |
| | M3-Stylus Extension (SS-4-L20) | 03969045 | 1 |
| | M3-Styli Holder 5-way (SS-L13) | 03969046 | 1 |
| | Plastic Box | | 1 |

M3-STYLUS KIT NO. 2



| Part No. | Item Description | Contents | QTY |
|----------|--------------------------------|----------|-----|
| 03969040 | M3-Stylus Kit No. 2 | | |
| | M3-Stylus (R-2-SS-1.4-L21) | 03969302 | 1 |
| | M3-Stylus (R-3-SS-1.5-L21) | 03969303 | 1 |
| | M3-Stylus (R-4-SS-2.5-L21) | 03969304 | 1 |
| | M3-Stylus Extension (SS-4-L10) | 03969044 | 1 |
| | M3-Stylus Extension (SS-4-L20) | 03969045 | 1 |
| | M3-Styli Holder 5-way (SS-L13) | 03969046 | 1 |
| | M2/M3-Mounting Pin | 03969600 | 1 |
| | D9.5-Stylus (SS-6.35-SS-5-L71) | | 1 |
| | Plastic Box | | 1 |

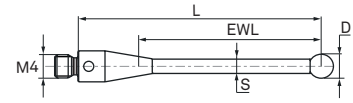
M3-STYLUS KIT NO. 3



| Part No. | Item Description | Contents | QTY |
|----------|--------------------------------|----------|-----|
| 03969102 | M3-Stylus Kit No. 3 | | |
| | M3-Stylus (R-2-SS-1.4-L21) | 03969302 | 1 |
| | M3-Stylus (R-3-SS-1.5-L21) | 03969303 | 1 |
| | M3-Stylus (R-4-SS-2.5-L21) | 03969304 | 1 |
| | M3-Stylus Extension (SS-4-L10) | 03969044 | 1 |
| | M3-Stylus Extension (SS-4-L20) | 03969045 | 1 |
| | M3-Styli Holder 5-way (SS-L13) | 03969046 | 1 |
| | Plastic Box | | 1 |

M4-STYLI WITH RUBY BALL

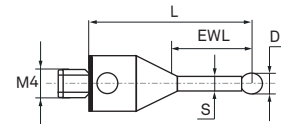
Stem: Ceramic



| Part No. | Material | L | D | S | EWL | W |
|----------|----------|--------|-----|-----|--------|-----|
| 03969426 | R / CE | 50.00 | 6.0 | 4.5 | 44.29 | 5.7 |
| 03969408 | R / CE | 50.00 | 8.0 | 4.5 | 50.00 | 5.4 |
| 03969427 | R / CE | 100.00 | 6.0 | 4.5 | 94.29 | 8.8 |
| 03969418 | R / CE | 100.00 | 8.0 | 4.5 | 100.00 | 9.0 |

M4-STYLUS WITH RUBY BALL

Stem: Stainless Steel

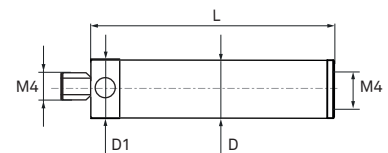


| Part No. | Material | L | D | S | EWL | W |
|----------|----------|-------|-----|-----|------|-----|
| 03969402 | R / SS | 19.00 | 2.0 | 1.4 | 8.00 | 2.3 |

M4-STYLUS EXTENSION

Stem: Ceramic

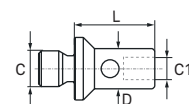
End Pieces: Stainless Steel



| Part No. | Material | L | D | D1 | W |
|----------|----------|-------|-----|-----|-----|
| 03969401 | CE / SS | 30.00 | 7.0 | 7.5 | 5.1 |

M4/M3-STYLUS ADAPTER

Material: Stainless Steel



| Part No. | Material | L | D | C | C1 | W |
|----------|----------|------|-----|----|----|-----|
| 03969403 | SS | 9.00 | 4.5 | M4 | M3 | 1.3 |



| Part No. | Item Description |
|----------|--------------------|
| 03969600 | M2/M3-Mounting Pin |



| Part No. | Item Description |
|----------|--------------------------------|
| 03969703 | Hexagon Socket Wrench AF1.5 mm |



| Part No. | Item Description |
|----------|-----------------------------------|
| 03969701 | M2-Key for Carbon Fibre Extension |

CROSS REFERENCE NUMBERS

TOUCH TRIGGER STYLI AND ACCESSORIES

| Renishaw Part No. | Hexagon Part No. | Item Description |
|-------------------|------------------|---|
| A-5000-3551 | 03969301 | M3-Stylus (R-1-SS-0.7-L21) |
| A-5000-3552 | 03969302 | M3-Stylus (R-2-SS-1.4-L21) |
| A-5000-3553 | 03969303 | M3-Stylus (R-3-SS-1.5-L21) |
| A-5000-3554 | 03969334 | M3-Stylus (R-4-SS-2.5-L31) |
| A-5000-3603 | 03969212 | M2-Stylus (R-2-SS-1.3-L20) |
| A-5000-3604 | 03969203 | M2-Stylus (R-3-SS-1.5-L10) |
| A-5000-3611 | 03969241 | M2-Disc Stylus (R-6-SS-L10) |
| A-5000-3613 | 03969243 | M2-Disc Stylus (CE-18-SS-L3.7) |
| A-5000-3614 | 03969218 | M2-Hollow Ball Stylus (CE-18-L11) |
| A-5000-3626 | 03969056 | M2-Star Stylus 5-way (R-2-SS-1.4-SP20/30) |
| A-5000-3627 | 03969054 | M2-Styli Holder 5-way (SS-L7.5) |
| A-5000-3709 | 03969426 | M4-Stylus (R-6-CE-4.5-L50) |
| A-5000-3712 | 03969427 | M4-Stylus (R-6-CE-4.5-L100) |
| A-5000-4154 | 03969204 | M2-Stylus (R-4-SS-1.65-L10) |
| A-5000-4155 | 03969205 | M2-Stylus (R-5-SS-2.5-L10) |
| A-5000-4156 | 03969206 | M2-Stylus (R-6-SS-2.7-L10) |
| A-5000-4158 | 03969208 | M2-Stylus (R-8-SS-2.7-L11) |
| A-5000-4160 | 03969213 | M2-Stylus (R-3-SS-1.5-L20) |
| A-5000-4161 | 03969214 | M2-Stylus (R-4-SS-2-L20) |
| A-5000-7534 | 03969059 | M2-Stylus Knuckle (SS-L8) |
| A-5000-7547 | 03969402 | M4-Stylus (R-2-SS-1.4-L19) |
| A-5000-7606 | 03969304 | M3-Stylus (R-4-SS-2.5-L21) |
| A-5000-7610 | 03969046 | M3-Styli Holder 5-way (SS-L13) |
| A-5000-7616 | 03969060 | M3-Stylus Knuckle (SS-L12) |
| A-5000-7629 | 03969055 | M2-Star Stylus 5-way (R-2-SS-1.4-SP20/20) |
| A-5000-7630 | 03969305 | M3-Stylus (R-5-SS-2.5-L21) |
| A-5000-7632 | 03969310 | M3-Stylus - Stepped (R-0.5-TC-0.32/0.7-L21) |
| A-5000-7648 | 03969335 | M3-Stylus - Tapered (R-5-SS-L31) |
| A-5000-7754 | 03969401 | M4-Stylus Extension (CE-7-SS-7.5-L30) |
| A-5000-7795 | 03969408 | M4-Stylus (R-8-CE-4.5-L50) |
| A-5000-7796 | 03969418 | M4-Stylus (R-8-CE-4.5-L100) |
| A-5000-7800 | 03969268 | M2-Stylus (R-0.3-TC-0.2-L10) |
| A-5000-7801 | 03969267 | M2-Stylus (R-0.7-TC-0.5-L10) |
| A-5000-7802 | 03969428 | M2-Stylus (R-1.5-SS-0.7-L10) |
| A-5000-7803 | 03969225 | M2-Stylus (R-2.5-SS-1-L10) |

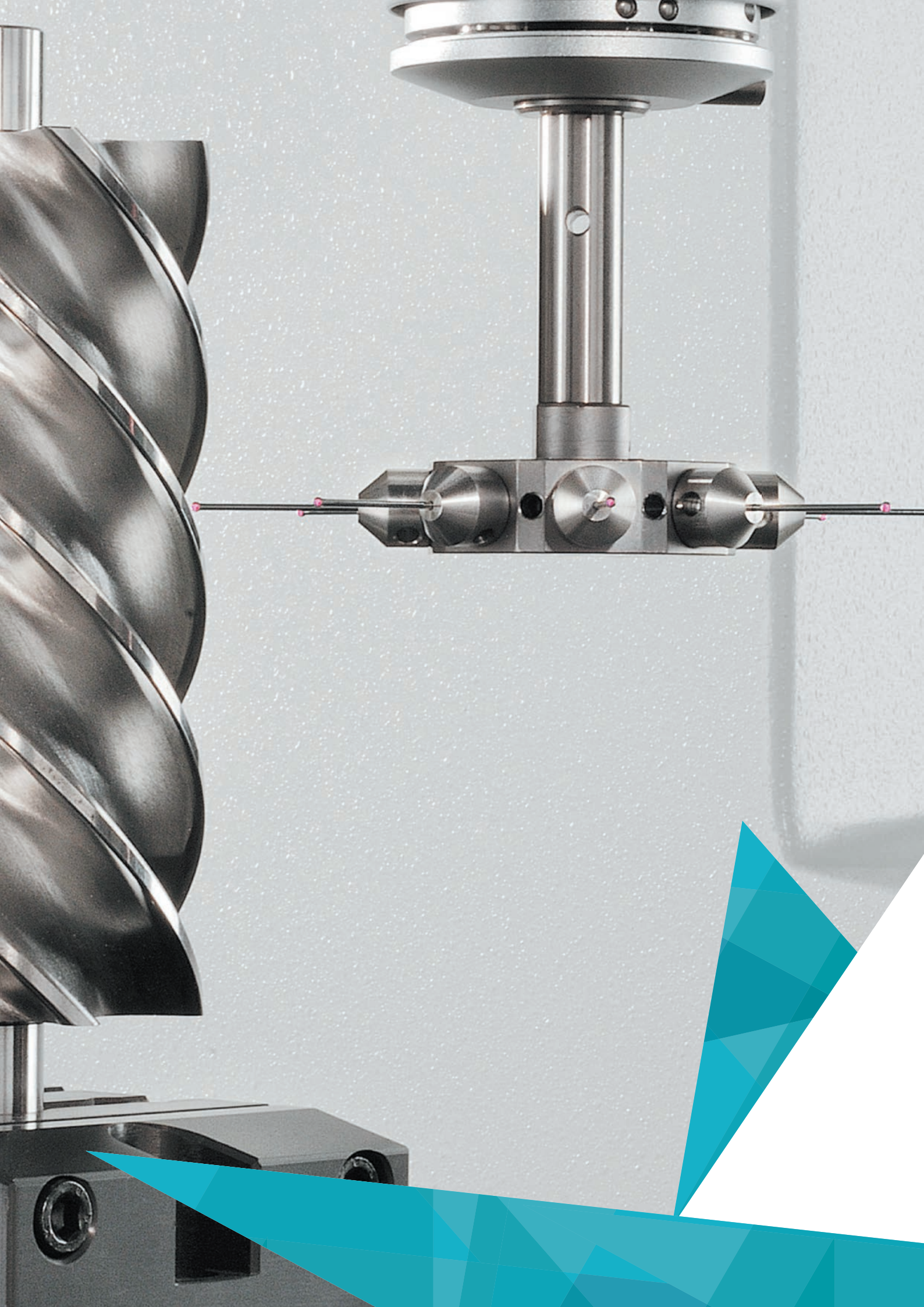
| Renishaw Part No. | Hexagon Part No. | Item Description |
|-------------------|------------------|---|
| A-5000-7804 | 03969226 | M2-Stylus (R-2.5-SS-1.4-L20) |
| A-5000-7805 | 03969220 | M2-Stylus - Stepped (R-0.5-TC-0.32/0.7-L10) |
| A-5000-7806 | 03969201 | M2-Stylus (R-1-SS-0.7-L10) |
| A-5000-7807 | 03969202 | M2-Stylus (R-2-SS-1.1-L10) |
| A-5000-7808 | 03969221 | M2-Stylus (R-1-TC-0.7-L20) |
| A-5000-7809 | 03969242 | M2-Disc Stylus (SV-18-SS-L7.5) |
| A-5000-7812 | 03969292 | M2-Spherical Cylinder Stylus (R-2-TC-1.6-L20) |
| A-5000-7813 | 03969141 | M2-Pointer Stylus (TC-3-L10-DEG30) |
| A-5000-7814 | 03969330 | M2-Hollow Ball Stylus (CE-30-L17) |
| A-5000-8663 | 03969259 | M2-Stylus (R-1-TC-0.7-L27) |
| A-5000-8876 | 03969445 | M2-Spherical Cylinder Stylus (R-1-L15) |
| A-5003-0033 | 03969271 | M2-Stylus (R-1-TC-0.8-L20) |
| A-5003-0034 | 03969272 | M2-Stylus (R-1.5-TC-1-L20) |
| A-5003-0035 | 03969261 | M2-Stylus (R-1.5-TC-1-L30) |
| A-5003-0036 | 03969262 | M2-Stylus (R-2-TC-1.5-L30) |
| A-5003-0037 | 03969282 | M2-Stylus (R-2-TC-1.5-L40) |
| A-5003-0040 | 03969263 | M2-Stylus (R-3-TC-2-L30) |
| A-5003-0041 | 03969283 | M2-Stylus (R-3-TC-2-L40) |
| A-5003-0042 | 03969293 | M2-Stylus (R-3-TC-2-L50) |
| A-5003-0043 | 03969429 | M2-Stylus (R-4-TC-2-L30) |
| A-5003-0044 | 03969284 | M2-Stylus (R-4-TC-2-L40) |
| A-5003-0045 | 03969294 | M2-Stylus (R-4-TC-2-L50) |
| A-5003-0046 | 03969430 | M2-Stylus (R-5-TC-2-L20) |
| A-5003-0049 | 03969295 | M2-Stylus (R-5-TC-2.5-L50) |
| A-5003-0050 | 03969431 | M3-Stylus (R-1.5-TC-1-L20) |
| A-5003-0051 | 03969432 | M3-Stylus (R-1.5-TC-1-L30) |
| A-5003-0052 | 03969322 | M3-Stylus (R-2-TC-1.5-L30) |
| A-5003-0053 | 03969433 | M3-Stylus (R-2-TC-1-L40) |
| A-5003-0054 | 03969332 | M3-Stylus (R-2.5-TC-2-L21) |
| A-5003-0055 | 03969342 | M3-Stylus (R-2.5-TC-2-L30) |
| A-5003-0057 | 03969313 | M3-Stylus (R-3-TC-2-L30) |
| A-5003-0058 | 03969343 | M3-Stylus (R-3-TC-2-L40) |
| A-5003-0059 | 03969353 | M3-Stylus (R-3-TC-2-L50) |
| A-5003-0060 | 03969434 | M3-Stylus (R-4-TC-2-L40) |
| A-5003-0061 | 03969435 | M3-Stylus (R-4-TC-2-L50) |

CROSS REFERENCE NUMBERS

TOUCH TRIGGER STYLI AND ACCESSORIES

| Renishaw Part No. | Hexagon Part No. | Item Description |
|-------------------|------------------|--|
| A-5003-0063 | 03969436 | M3-Stylus (R-5-TC-2-L50) |
| A-5003-0064 | 03969223 | M2-Stylus (R-3-CE-2-L50) |
| A-5003-0065 | 03969224 | M2-Stylus (R-4-CE-2-L50) |
| A-5003-0067 | 03969437 | M3-Stylus (R-3-CE-1.5-L50) |
| A-5003-0071 | 03969246 | M2-Stylus Extension (CE-3-SS-3-L40) |
| A-5003-0072 | 03969247 | M2-Stylus Extension (CE-3-SS-3-L50) |
| A-5003-0074 | 03969280 | M2-Spherical Cylinder Stylus (TC/TC-2-L40) |
| A-5003-0076 | 03969058 | M3-Star Stylus 5-way (R-2-SS-1.4-SP20/30) |
| A-5003-0577 | 03969438 | M2-Stylus (R-0.7-TC-0.5-L20) |
| A-5003-0938 | 03969439 | M2-Stylus (R-3-TC-1.5-L20) |
| A-5003-1029 | 03969440 | M2-Stylus (R-4-TC-2-L20) |
| A-5003-1210 | 03969277 | M2-Spherical Cylinder Stylus (TC/TC-0.5-L15.3) |
| A-5003-1218 | 03969278 | M2-Spherical Cylinder Stylus (TC/TC-1-L35.5) |
| A-5003-1228 | 03969279 | M2-Spherical Cylinder Stylus (TC/TC-2-L16) |
| A-5003-1258 | 03969281 | M2-Spherical Cylinder Stylus (TC/TC-3-L22.5) |
| A-5003-1325 | 03969441 | M2-Stylus (R-1-TC-0.8-L10) |
| A-5003-1345 | 03969269 | M2-Stylus (R-0.5-TC-0.3-L20) |
| A-5003-1370 | 03969442 | M2-Stylus (R-4-CE-2-L30) |
| A-5003-2280 | 03969270 | M2-Stylus Extension (CF-3-SS-3.5-L40) |
| A-5003-2281 | 03969238 | M2-Stylus Extension (CF-3-SS-3.5-L50) |
| A-5003-2282 | 03969239 | M2-Stylus Extension (CF-3-SS-3.5-L70) |
| A-5003-2283 | 03969240 | M2-Stylus Extension (CF-3-SS-3.5-L90) |
| A-5003-2285 | 03969260 | M2-Stylus (R-4-CF-3-L50) |
| A-5003-2286 | 03969425 | M2-Stylus (R-5-CF-3-L50) |
| A-5003-2287 | 03969276 | M2-Stylus (R-6-CF-3-L50) |
| A-5003-2300 | 03969701 | M2-Key for Carbon Fibre Extensions |
| A-5003-3822 | 03969222 | M2-Stylus (R-2-TC-1-L20) |
| A-5003-4011 | 03969422 | M2-Star Stylus 4-way (R-0.5-TC-0.3-SP10) |
| A-5003-4782 | 03969286 | M2-Stylus (R-6-CF-3-L30) |
| A-5003-4784 | 03969424 | M2-Stylus (R-4-CF-2-L75) |
| A-5003-4787 | 03969210 | M2-Star Stylus 4-way (R-0.5-TC-0.3-SP20) |
| A-5003-4788 | 03969423 | M2-Star Stylus 4-way (R-1-TC-0.7-SP20) |
| A-5003-4860 | 03969450 | M3-Stylus (R-6-CF-4-L75) |
| A-5003-4864 | 03969446 | M3-Stylus Extension (CF-4-DA-5.5-L75) |
| A-5003-4865 | 03969447 | M3-Stylus Extension (CF-4-DA-5.5-L100) |

| Renishaw Part No. | Hexagon Part No. | Item Description |
|-------------------|------------------|--------------------------------------|
| A-5003-5723 | 03969421 | M3-Stylus (SN-2-TC-1.4-L21) |
| A-5004-0422 | 03969324 | M3-Stylus (R-3-SS-1.5-L10) |
| A-5004-1979 | 03969420 | M3-Stylus (SN-1-TC-0.7-L21.5) |
| A-5004-7582 | 03969600 | M2/M3-Mounting Pin |
| A-5004-7583 | 03969045 | M3-Stylus Extension (SS-4-L20) |
| A-5004-7584 | 03969320 | M3-Stylus Extension (SS-4-L35) |
| A-5004-7585 | 03969231 | M2-Stylus Extension (SS-3-L10) |
| A-5004-7586 | 03969232 | M2-Stylus Extension (SS-3-L20) |
| A-5004-7588 | 03969200 | M2-Pointer Stylus (SS-3-L15-DEG30) |
| A-5004-7589 | 03969251 | M2-Cylinder Stylus (SS-1.5-SS-1-L11) |
| A-5004-7590 | 03969253 | M2-Cylinder Stylus (SS-3-SS-1.5-L13) |
| A-5004-7591 | 03969233 | M2-Stylus Extension (SS-3-L30) |
| A-5004-7592 | 03969062 | M3/M2-Stylus Adapter (SS-L5) |
| A-5004-7593 | 03969061 | M2/M3-Stylus Adapter (SS-L7) |
| A-5004-7597 | 03969403 | M4/M3-Stylus Adapter (SS-L9) |
| A-5004-7609 | 03969044 | M3-Stylus Extension (SS-4-L10) |
| A-5004-7610 | 03969230 | M2-Stylus Extension (SS-3-L5) |
| A-5004-7611 | 03969234 | M2-Stylus Extension (SS-3-L40) |
| M-5000-3540 | 03969600 | M2/M3-Mounting Pin |
| M-5000-3592 | 03969045 | M3-Stylus Extension (SS-4-L20) |
| M-5000-3593 | 03969320 | M3-Stylus Extension (SS-4-L35) |
| M-5000-3647 | 03969231 | M2-Stylus Extension (SS-3-L10) |
| M-5000-3648 | 03969232 | M2-Stylus Extension (SS-3-L20) |
| M-5000-4150 | 03969200 | M2-Pointer Stylus (SS-3-L15-DEG30) |
| M-5000-4152 | 03969251 | M2-Cylinder Stylus (SS-1.5-SS-1-L11) |
| M-5000-4153 | 03969253 | M2-Cylinder Stylus (SS-3-SS-1.5-L13) |
| M-5000-4162 | 03969233 | M2-Stylus Extension (SS-3-L30) |
| M-5000-4163 | 03969062 | M3/M2-Stylus Adapter (SS-L5) |
| M-5000-4164 | 03969061 | M2/M3-Stylus Adapter (SS-L7) |
| M-5000-6714 | 03969403 | M4/M3-Stylus Adapter (SS-L9) |
| M-5000-7633 | 03969044 | M3-Stylus Extension (SS-4-L10) |
| M-5000-7634 | 03969230 | M2-Stylus Extension (SS-3-L5) |
| M-5000-7779 | 03969234 | M2-Stylus Extension (SS-3-L40) |
| M-5000-7813 | 03969141 | M2-Pointer Stylus (TC-3-L10-DEG30) |



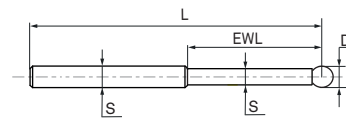
SCANNING

STYLI AND ACCESSORIES

| | |
|---------------------------------|-------------|
| D2 Styli | Page |
| Styli | 38 |
| M3 Styli and Accessories | |
| Styli | 40 |
| Stylus Extensions | 42 |
| Stylus Accessories | 43 |
| Clampings & Holders | 44 |
| Stylus Kits | 47 |
| M5 Styli and Accessories | |
| Styli | 51 |
| Stylus Extensions | 57 |
| Stylus Accessories | 59 |
| Clampings & Holders | 61 |
| Stylus Kits | 64 |
| Tools | |
| Tools | 66 |
| Cross Reference Numbers | |
| Renishaw ITP Hexagon | 67 |

D2-STYLI WITH RUBY BALL

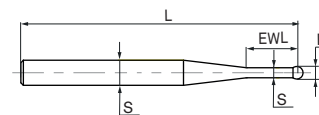
Stem: Tungsten Carbide (stepped)



| Part No. | Material | L | D | S | EWL | W |
|-----------------|----------|-------|-----|-----------|------|-----|
| 060-694.065-000 | R / TC | 22.00 | 2.0 | 1.5 / 2.0 | 9.60 | 0.8 |
| 060-694.066-000 | R / TC | 22.00 | 1.5 | 1.2 / 2.0 | 9.60 | 0.8 |

D2-STYLI WITH RUBY BALL

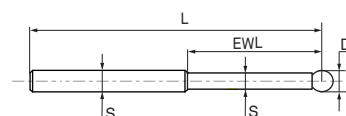
Stem: Tungsten Carbide (tapered)



| Part No. | Material | L | D | S | EWL | W |
|-----------------|----------|-------|-----|-----------|-------|-----|
| M00-694-067-005 | R / TC | 22.00 | 0.3 | 0.2 / 2.0 | 4.00 | 0.7 |
| M00-694-064-005 | R / TC | 22.00 | 0.5 | 0.3 / 2.0 | 4.00 | 0.7 |
| M00-694-063-005 | R / TC | 22.00 | 0.8 | 0.6 / 2.0 | 4.00 | 0.8 |
| M00-694-062-005 | R / TC | 22.00 | 1.0 | 0.8 / 2.0 | 4.00 | 0.8 |
| M02-J01-100-008 | R / TC | 34.00 | 1.0 | 0.8 / 2.0 | 14.00 | 1.0 |

D2-STYLI WITH SILICON NITRIDE BALL

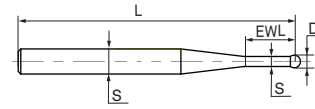
Stem: Tungsten Carbide (stepped)



| Part No. | Material | L | D | S | EWL | W |
|-----------------|----------|-------|-----|-----------|------|-----|
| M00-694-078-000 | SN / TC | 22.00 | 1.5 | 1.2 / 2.0 | 9.60 | 0.7 |
| M00-694-079-000 | SN / TC | 22.00 | 2.0 | 1.5 / 2.0 | 9.60 | 0.8 |

D2-STYLUS WITH SILICON NITRIDE BALL

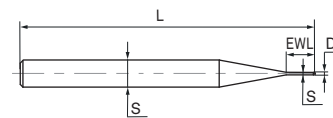
Stem: Tungsten Carbide (tapered)



| Part No. | Material | L | D | S | EWL | W |
|-----------------|----------|-------|-----|-----------|------|---|
| M00-694-077-000 | SN / TC | 22.00 | 1.0 | 0.8 / 2.0 | 4.00 | - |

D2-STYLI WITH TUNGSTEN CARBIDE BALL

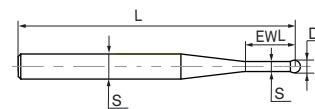
Stem: Tungsten Carbide (tapered)



| Part No. | Material | L | D | S | EWL | W |
|-----------------|----------|-------|-----|------------|------|---|
| M00-694-070-000 | TC / TC | 22.00 | 0.1 | 0.08 / 2.0 | 2.00 | - |
| M00-694-071-000 | TC / TC | 22.00 | 0.2 | 0.17 / 2.0 | 2.00 | - |

D2-STYLUS WITH DIAMOND SPHERE

Stem: Tungsten Carbide (tapered)



| Part No. | Material | L | D | S | EWL | W |
|-----------------|----------|-------|-----|-----------|------|-----|
| M00-694-190-000 | DS / TC | 22.00 | 1.0 | 0.8 / 2.0 | 4.00 | 1.4 |

M3-STYLUS WITH RUBY BALL

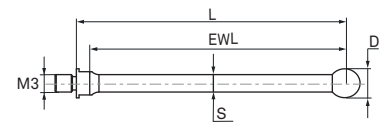
Stem: Stainless Steel (stepped)



| Part No. | Material | L | D | S | EWL | W |
|------------------|----------|-------|-----|-----------|------|-----|
| M00-1121-026-000 | R / SS | 39.50 | 2.0 | 1.0 / 2.0 | 3.20 | 1.5 |

M3-STYLI WITH RUBY BALL

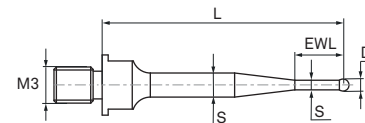
Stem: Stainless Steel



| Part No. | Material | L | D | S | EWL | W |
|-----------------|----------|--------|-----|-----|-------|-----|
| M00-694-210-000 | R / SS | 20.00 | 1.5 | 1.0 | 17.50 | 0.7 |
| M00-694-211-000 | R / SS | 20.00 | 3.0 | 2.0 | 17.50 | 2.3 |
| M00-694-212-000 | R / SS | 20.00 | 5.0 | 3.0 | 17.50 | 1.7 |
| M00-694-213-000 | R / SS | 20.00 | 8.0 | 3.0 | 17.50 | 2.4 |
| M00-694-220-000 | R / SS | 50.00 | 3.0 | 2.0 | 47.50 | 1.8 |
| M00-694-221-000 | R / SS | 50.00 | 5.0 | 3.0 | 47.50 | 3.3 |
| M00-694-240-000 | R / SS | 75.00 | 5.0 | 3.0 | 72.50 | 4.7 |
| M00-694-230-000 | R / SS | 100.00 | 5.0 | 3.0 | 97.50 | 6.0 |

M3-STYLUS WITH RUBY BALL

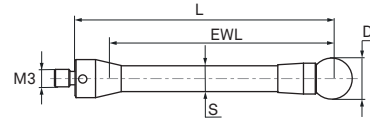
Stem: Stainless Steel (tapered)



| Part No. | Material | L | D | S | EWL | W |
|-----------------|----------|-------|------|-----------|------|-----|
| M00-694-214-000 | R / SS | 20.00 | 1.00 | 0.8 / 2.0 | 4.00 | 0.9 |

M3-STYLI WITH RUBY BALL

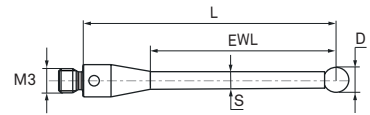
Stem: Carbon Fibre



| Part No. | Material | L | D | S | EWL | W |
|-----------------|----------|--------|-----|-----|--------|-----|
| M00-694-222-000 | R / CF | 50.00 | 8.0 | 5.0 | 50.00 | 2.9 |
| M00-694-241-000 | R / CF | 75.00 | 8.0 | 5.0 | 75.00 | 3.7 |
| M00-694-231-000 | R / CF | 100.00 | 8.0 | 5.0 | 100.00 | 4.5 |

M3-STYLUS WITH RUBY BALL

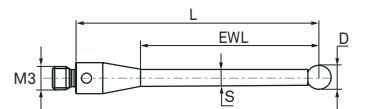
Stem: Ceramic



| Part No. | Material | L | D | S | EWL | W |
|------------------|----------|-------|-----|-----|-------|-----|
| M00-1121-020-000 | R / CE | 50.00 | 5.0 | 2.5 | 41.00 | 1.5 |

M3-STYLI WITH DIAMOND COATED SPHERE

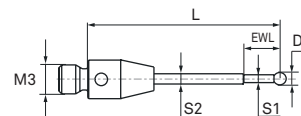
Stem: Tungsten Carbide



| Part No. | Material | L | D | S | EWL | W |
|-----------------|----------|-------|-----|-----|-------|---|
| M00-694-198-000 | DC / TC | 20.00 | 3.0 | 2.0 | 14.00 | - |
| M00-694-199-000 | DC / TC | 50.00 | 3.0 | 2.0 | 44.00 | - |

M3-STYLUS WITH DIAMOND COATED SPHERE

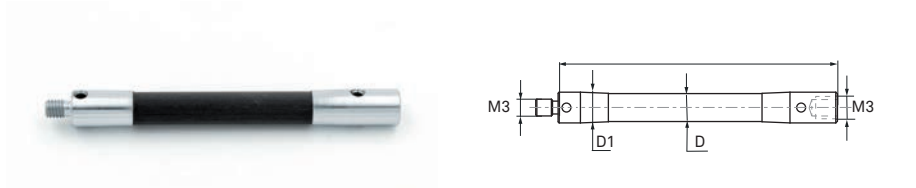
Stem: Tungsten Carbide (stepped)



| Part No. | Material | L | D | S | EWL | W |
|-----------------|----------|----|-----|-----------|------|---|
| M00-694-197-000 | DC / TC | 20 | 1.0 | 0.8 / 1.0 | 4.50 | - |

M3-STYLUS EXTENSIONS

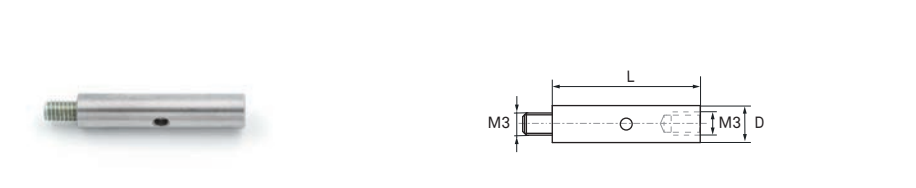
Stem: Carbon Fibre
End Pieces: Dispal®



| Part No. | Material | L | D | D1 | W |
|-----------------|----------|--------|-----|-----|-----|
| M00-694-245-000 | CF / DA | 50.00 | 5.0 | 5.5 | 1.9 |
| M00-694-248-000 | CF / DA | 150.00 | 5.0 | 5.5 | 4.8 |

M3-STYLUS EXTENSION

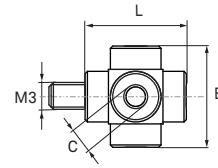
Material: Stainless Steel



| Part No. | Material | L | D | D1 | W |
|-----------------|----------|----|-----|----|-----|
| M00-694-280-000 | SS | 20 | 5.0 | - | 2.4 |

M3-CUBES

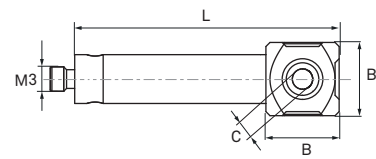
Material: Dispal®



| Part No. | Material | L | B | C | W |
|-----------------|----------|-------|-------|--------|-----|
| M00-694-243-000 | DA | 13.00 | 13.00 | 5 x M3 | 2.3 |
| M00-694-246-000 | DA | 13.00 | 13.00 | 5 x D2 | 2.3 |

M3-CUBE WITH EXTENSION

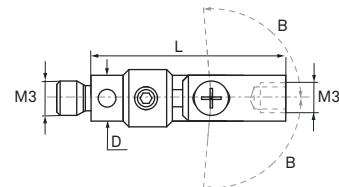
Material: Stainless Steel



| Part No. | Material | L | B | C | W |
|------------------|----------|-------|-----------|--------|-----|
| M00-1126-001-000 | SS | 32.50 | 9.0 x 9.0 | 5 x M3 | 9.5 |

M3-ROTARY STYLUS KNUCKLE

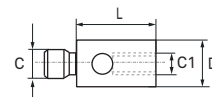
Material: Stainless Steel



| Part No. | Material | L | D | B | W |
|------------------|----------|-------|-----|-------|-----|
| M00-1125-002-000 | SS | 17.00 | 4.0 | ± 95° | 2.2 |

M3/M2-STYLUS ADAPTER

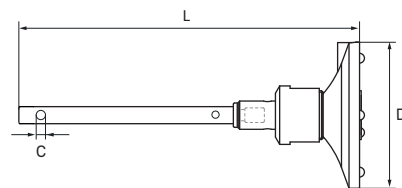
Material: Stainless Steel



| Part No. | Material | L | D | C | C1 | W |
|------------------|----------|------|-----|----|----|-----|
| M00-1126-011-000 | SS | 5.00 | 4.0 | M3 | M2 | 0.6 |

HP-S-X1C/H STYLUS CLAMPING WITH HOLDER 90°

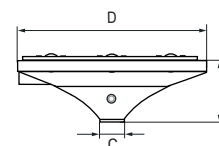
Material: Stainless Steel



| Part No. | Material | L | D | C | W |
|-----------------|----------|-------|------|----|------|
| M00-694-055-000 | SS | 69.69 | 30.0 | D2 | 19.0 |

HP-S-X1C/H STYLUS CLAMPINGS

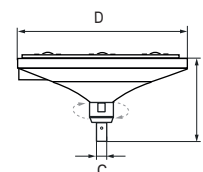
Material: Aluminium



| Part No. | Material | L | D | C | W |
|-----------------|----------|------|------|----|-----|
| M00-694-275-000 | AL | 9.30 | 30.0 | D2 | 7.5 |
| M00-694-209-000 | AL | 9.30 | 30.0 | M3 | 7.4 |

HP-S-X1C/H STYLUS CLAMPING (ROTATABLE)

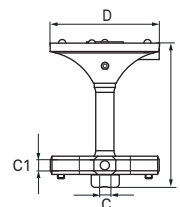
Material: Aluminium / Dispal®



| Part No. | Material | L | D | C | W |
|-----------------|----------|-------|------|----|------|
| M00-694-244-000 | AL / DA | 22.00 | 30.0 | M3 | 14.8 |

HP-S-X1C/H STYLUS CLAMPINGS WITH STAR HOLDER

Material: Aluminium / Dispal®



| Part No. | Material | L | D | C | C1 | W |
|-----------------|----------|-------|------|----|--------|------|
| M00-694-271-000 | AL / DA | 39.50 | 30.0 | D2 | 4 x D2 | 17.5 |
| M00-694-270-000 | AL / DA | 36.50 | 30.0 | M3 | 4 x M3 | 15.5 |
| M00-694-272-000 | AL / DA | 39.50 | 30.0 | D2 | 8 x D2 | 18.1 |
| M00-694-273-000 | AL / DA | 36.50 | 30.0 | M3 | 8 x M3 | 16.4 |

HP-S-X1C/H STYLUS CLAMPING WITH STYLUS HOLDER 30°/45°

Material: Aluminium / Dispal®



| Part No. | Material | L | D | C | C1 | W |
|-----------------|----------|-------|------|----|--------|------|
| M00-694-274-000 | AL / DA | 22.00 | 30.0 | M3 | 2 x M3 | 12.4 |

HP-S-X1S STYLUS CLAMPINGS

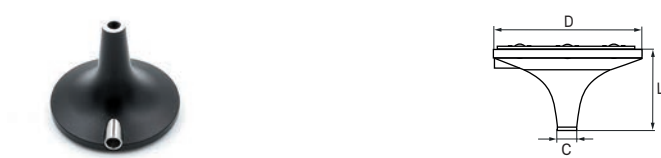
Material: Aluminium / Dispal®



| Part No. | Material | L | D | C | W |
|-----------------|----------|------|------|----|-----|
| M00-694-208-000 | AL / DA | 9.30 | 30.0 | D2 | 6.8 |
| M00-694-200-000 | AL / DA | 9.30 | 30.0 | M3 | 6.9 |

HP-S-X1S STYLUS CLAMPING

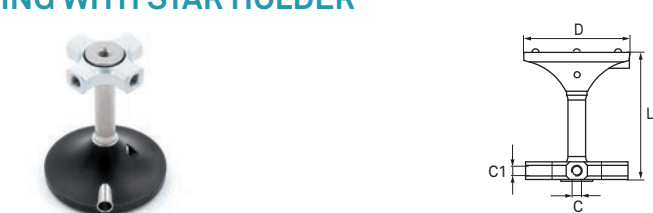
Material: Aluminium / Dispal®



| Part No. | Material | L | D | C | W |
|-----------------|----------|-------|------|----|-----|
| M00-694-206-000 | AL / DA | 24.30 | 30.0 | M3 | 8.8 |

HP-S-X1S STYLUS CLAMPING WITH STAR HOLDER

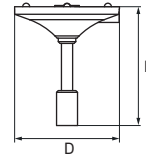
Material: Aluminium / Dispal®



| Part No. | Material | L | D | C | C1 | W |
|-----------------|----------|-------|------|----|--------|------|
| M00-694-279-000 | AL / DA | 36.50 | 30.0 | M3 | 4 x M3 | 13.5 |

HP-S-X1S STYLUS CLAMPING WITH PORT ADJUSTMENT STYLUS

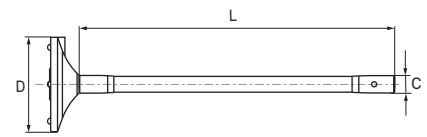
Material: Aluminium / Stainless Steel



| Part No. | Material | L | D | C | W |
|-----------------|----------|-------|------|---|------|
| M00-694-250-000 | AL / SS | 35.00 | 30.0 | - | 10.1 |

HP-S-X1M STYLUS CLAMPINGS WITH CARBON FIBRE EXTENSION

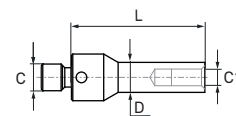
Material: Aluminium / Dispal®



| Part No. | Material | L | D | C | W |
|-----------------|----------|--------|------|----|------|
| M00-694-201-000 | AL / DA | 100.00 | 30.0 | M3 | 11.6 |
| M00-694-202-000 | AL / DA | 115.00 | 30.0 | M3 | 11.2 |
| M00-694-207-000 | AL / DA | 150.00 | 30.0 | M3 | 12.2 |

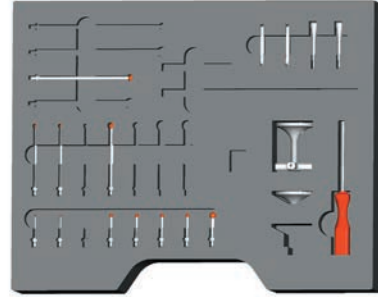
M4/M3-STYLUS ADAPTER

Material: Stainless Steel



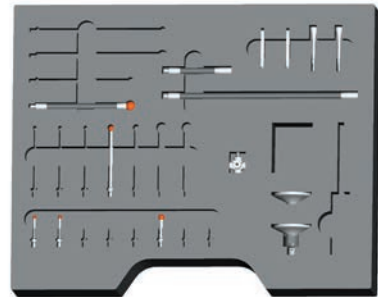
| Part No. | Material | L | D | C | C1 | W |
|------------------|----------|-------|-----|----|----|-----|
| M00-1126-012-000 | SS | 20.00 | 4.5 | M4 | M3 | 3.5 |

M3-STYLUS KIT FOR HP-S-X1C SENSOR



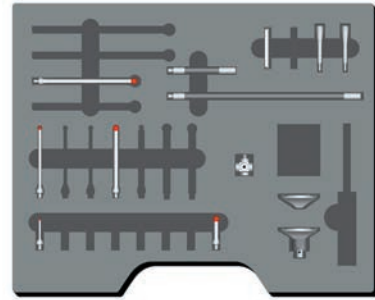
| Part No. | Item Description | Contents | QTY |
|-----------------|---|-----------------|-----|
| M00-694-008-000 | M3-Stylus Kit for HP-S-X1C Sensor | | |
| | HP-S-X1C/H Stylus Clamping (1x M3) | M00-694-209-000 | 1 |
| | HP-S-X1C/H Stylus Clamping with Star Holder (5x M3) | M00-694-270-000 | 1 |
| | M3-Stylus (R-1.5-SS-1-L20) | M00-694-210-000 | 2 |
| | M3-Stylus (R-3-SS-2-L20) | M00-694-211-000 | 4 |
| | M3-Stylus (R-5-SS-3-L20) | M00-694-212-000 | 1 |
| | M3-Stylus (R-3-SS-2-L50) | M00-694-220-000 | 2 |
| | M3-Stylus (R-5-SS-3-L50) | M00-694-221-000 | 1 |
| | M3-Stylus (R-5-SS-3-L75) | M00-694-240-000 | 1 |
| | Mounting Key AF4.1/3.6 mm (SS-L30) | M00-114-006-130 | 2 |
| | Hexagon Socket Screwdriver AF1.5 mm | M02-B04-000-035 | 1 |
| | Mounting Pin | M00-114-006-140 | 2 |
| | Storage Box | | 1 |

M3-STYLUS KIT FOR HP-S-X1H SENSOR



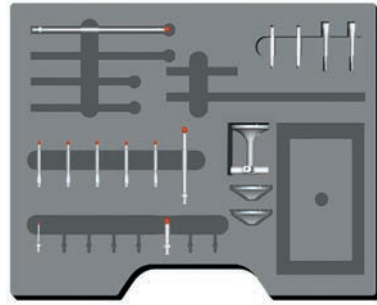
| Part No. | Item Description | Contents | QTY |
|-----------------|--|-----------------|-----|
| M00-694-014-000 | M3-Stylus Kit for HP-S-X1H Sensor | | |
| | HP-S-X1C/H Stylus Clamping (Rotatable) (1x M3) | M00-694-244-000 | 1 |
| | HP-S-X1C/H Stylus Clamping (1x M3) | M00-694-209-000 | 1 |
| | M3-Stylus (R-3-SS-2-L20) | M00-694-211-000 | 2 |
| | M3-Stylus (R-5-SS-3-L20) | M00-694-212-000 | 1 |
| | M3-Stylus (R-5-SS-3-L50) | M00-694-221-000 | 1 |
| | M3-Stylus (R-8-CF-5-L75) | M00-694-241-000 | 1 |
| | M3-Stylus Extension (CF-5-DA-5.5-L50) | M00-694-245-000 | 1 |
| | M3-Stylus Extension (CF-5-DA-5.5-L150) | M00-694-248-000 | 1 |
| | M3-Cube 13x13 mm (5x M3) (DA) | M00-694-243-000 | 1 |
| | Mounting Key AF4.1/3.6 mm (SS-L30) | M00-114-006-130 | 2 |
| | Mounting Pin | M00-114-006-140 | 2 |
| | Storage Box | | 1 |

M3-STYLUS KIT FOR HP-S-X1C/H SENSORS



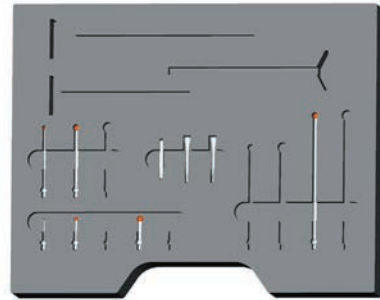
| Part No. | Item Description | Contents | QTY |
|-----------------|--|-----------------|-----|
| M00-694-024-000 | M3-Stylus Kit for HP-S-X1C/H Sensors | | |
| | HP-S-X1C/H Stylus Clamping (1x M3) | M00-694-209-000 | 1 |
| | HP-S-X1C/H Stylus Clamping (Rotatable) (1x M3) | M00-694-244-000 | 1 |
| | M3-Stylus (R-1.5-SS-1-L20) | M00-694-210-000 | 1 |
| | M3-Stylus (R-5-SS-3-L20) | M00-694-212-000 | 1 |
| | M3-Stylus (R-3-SS-2-L50) | M00-694-220-000 | 1 |
| | M3-Stylus (R-5-SS-3-L50) | M00-694-221-000 | 1 |
| | M3-Stylus (R-5-SS-3-L75) | M00-694-240-000 | 1 |
| | M3-Stylus Extension (CF-5-DA-5.5-L50) | M00-694-245-000 | 1 |
| | M3-Stylus Extension (CF-5-DA-5.5-L150) | M00-694-248-000 | 1 |
| | M3-Cube 13x13 mm (5x M3) (DA) | M00-694-243-000 | 1 |
| | Mounting Key AF4.1/3.6 mm (SS-L30) | M00-114-006-130 | 1 |
| | Mounting Pin | M00-114-006-140 | 2 |
| | Storage Box | | 1 |

M3-STYLUS KIT FOR HP-S-X1C SENSOR (TIGO SF)



| Part No. | Item Description | Contents | QTY |
|-----------------|---|-----------------|-----|
| M00-694-019-000 | M3-Stylus Kit for HP-S-X1C Sensor (TIGO SF) | | |
| | HP-S-X1C/H Stylus Clamping (1x M3) | M00-694-209-000 | 2 |
| | HP-S-X1C/H Stylus Clamping with Star Holder (5x M3) | M00-694-270-000 | 1 |
| | M3-Stylus (R-1.5-SS-1-L20) | M00-694-210-000 | 1 |
| | M3-Stylus (R-5-SS-3-L20) | M00-694-212-000 | 1 |
| | M3-Stylus (R-3-TC-2-L30) | 03969313 | 5 |
| | M3-Stylus (R-5-SS-3-L50) | M00-694-221-000 | 1 |
| | M3-Stylus (R-5-SS-3-L100) | M00-694-230-000 | 1 |
| | Mounting Key AF4.1/3.6 mm (SS-L30) | M00-114-006-130 | 2 |
| | Mounting Pin | 03969600 | 2 |
| | Storage Box | | 1 |

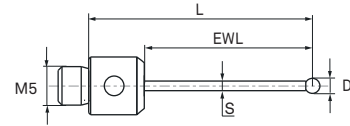
M3-STYLUS KIT FOR HP-S-X1S SENSOR



| Part No. | Item Description | Contents | QTY |
|-----------------|------------------------------------|-----------------|-----|
| M00-694-009-000 | M3-Stylus Kit for HP-S-X1S Sensor | | |
| | M3-Stylus (R-1.5-SS-1-L20) | M00-694-210-000 | 1 |
| | M3-Stylus (R-3-SS-2-L20) | M00-694-211-000 | 1 |
| | M3-Stylus (R-5-SS-3-L20) | M00-694-212-000 | 1 |
| | M3-Stylus (R-3-SS-2-L50) | M00-694-220-000 | 1 |
| | M3-Stylus (R-5-SS-3-L50) | M00-694-221-000 | 1 |
| | M3-Stylus (R-5-SS-3-L100) | M00-694-230-000 | 1 |
| | Mounting Key AF4.1/3.6 mm (SS-L30) | M00-114-006-130 | 1 |
| | Mounting Pin | M00-114-006-140 | 2 |
| | Storage Box | | 1 |

M5-STYLI WITH RUBY BALL

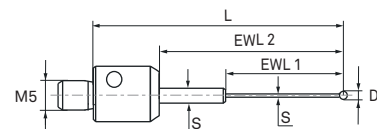
Stem: Tungsten Carbide



| Part No. | Material | L | D | S | EWL | W |
|------------------|----------|--------|-----|-----|--------|------|
| M00-1121-011-000 | R / TC | 14.50 | 1.0 | 0.8 | 3.50 | 9.5 |
| M00-1121-003-000 | R / TC | 20.00 | 3.0 | 2.0 | 9.00 | 10.0 |
| M00-1121-048-000 | R / TC | 23.50 | 3.0 | 2.0 | 12.50 | 10.0 |
| M00-1121-046-000 | R / TC | 29.00 | 2.0 | 1.5 | 18.00 | 10.0 |
| 060-694.150-007 | R / TC | 30.00 | 2.0 | 1.5 | 19.00 | 9.8 |
| M00-1121-004-000 | R / TC | 30.00 | 3.0 | 2.0 | 19.00 | 11.0 |
| M00-1121-049-000 | R / TC | 32.00 | 3.0 | 2.0 | 21.00 | 11.0 |
| 060-694.050-000 | R / TC | 35.00 | 3.0 | 2.0 | 24.00 | 10.4 |
| M00-1121-047-000 | R / TC | 39.00 | 2.0 | 1.5 | 28.00 | 10.0 |
| 060-694.150-013 | R / TC | 41.00 | 2.0 | 1.5 | 30.00 | 10.1 |
| M00-1121-050-000 | R / TC | 48.50 | 3.0 | 2.0 | 37.50 | 11.5 |
| 060-694.051-000 | R / TC | 50.00 | 3.0 | 2.0 | 39.00 | 11.0 |
| M00-694-150-017 | R / TC | 55.00 | 4.0 | 2.5 | 44.00 | 12.5 |
| M00-1121-051-000 | R / TC | 56.50 | 3.0 | 2.0 | 45.50 | 12.0 |
| 060-694.053-000 | R / TC | 60.00 | 5.0 | 3.5 | 47.00 | 17.9 |
| M00-1121-052-000 | R / TC | 62.00 | 4.0 | 2.0 | 51.00 | 12.0 |
| M00-1121-053-000 | R / TC | 72.50 | 5.0 | 3.5 | 61.50 | 20.0 |
| M00-694-150-018 | R / TC | 80.00 | 4.0 | 2.5 | 69.00 | 14.3 |
| 060-694.054-000 | R / TC | 80.00 | 5.0 | 3.5 | 67.00 | 20.7 |
| 060-694.056-000 | R / TC | 90.00 | 8.0 | 6.0 | 72.00 | 46.5 |
| 060-694.150-005 | R / TC | 91.00 | 3.5 | 3.0 | 78.00 | 28.0 |
| M00-1121-054-000 | R / TC | 97.50 | 5.0 | 3.5 | 86.50 | 24.0 |
| M00-1121-044-000 | R / TC | 98.25 | 3.5 | 2.5 | 87.25 | 16.0 |
| M00-1121-017-000 | R / TC | 98.50 | 3.0 | 2.0 | 87.50 | 14.0 |
| M00-694-138-000 | R / TC | 130.00 | 8.0 | 6.0 | 112.00 | 62.8 |
| 060-694.150-014 | R / TC | 176.00 | 8.0 | 6.0 | 158.00 | 81.5 |

M5-STYLI WITH RUBY BALL

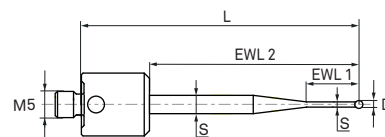
Stem: Tungsten Carbide (stepped)



| Part No. | Material | L | D | S | EWL 1/2 | W |
|------------------|----------|-------|-----|-----------|---------------|------|
| M00-1121-058-000 | R / TC | 21.75 | 0.5 | 0.3 / 1.0 | 2.25 / 10.75 | 10.0 |
| M00-1121-043-000 | R / TC | 29.25 | 1.5 | 1.0 / 1.5 | 7.25 / 18.25 | 10.0 |
| M00-1121-045-000 | R / TC | 29.50 | 1.0 | 0.8 / 1.0 | 4.50 / 18.50 | 9.5 |
| M00-1121-041-000 | R / TC | 43.25 | 1.5 | 1.0 / 4.0 | 19.00 / 32.25 | 10.0 |
| M00-1121-042-000 | R / TC | 57.00 | 2.0 | 1.5 / 4.0 | 32.00 / 46.00 | 11.0 |
| 060-694.150-006 | R / TC | 66.00 | 2.0 | 1.5 / 4.0 | 15.00 / 56.00 | 13.0 |

M5-STYLUS WITH RUBY BALL

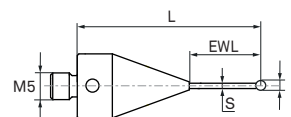
Stem: Tungsten Carbide (tapered)



| Part No. | Material | L | D | S | EWL 1/2 | W |
|-----------------|----------|-------|-----|-----------|---------------|------|
| M00-694-150-019 | R / TC | 53.00 | 1.5 | 1.0 / 3.5 | 10.00 / 40.00 | 15.0 |

M5-STYLI WITH RUBY BALL

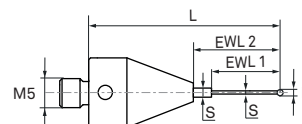
Stem: Tungsten Carbide



| Part No. | Material | L | D | S | EWL | W |
|------------------|----------|-------|-----|-----|-------|------|
| M00-1121-002-000 | R / TC | 20.00 | 1.0 | 0.7 | 5.00 | 9.3 |
| M00-694-150-016 | R / TC | 28.00 | 1.5 | 1.0 | 7.00 | 10.2 |
| M00-1121-056-000 | R / TC | 30.00 | 0.7 | 0.5 | 5.00 | 15.0 |
| M02-J01-100-001 | R / TC | 40.00 | 1.5 | 1.0 | 19.00 | 10.3 |
| M02-J01-100-003 | R / TC | 60.00 | 2.0 | 1.5 | 39.50 | 11.6 |

M5-STYLUS WITH RUBY BALL

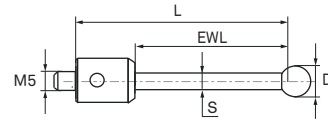
Stem: Tungsten Carbide (stepped)



| Part No. | Material | L | D | S | EWL 1/2 | W |
|------------------|----------|-------|-----|-----------|-------------|------|
| M00-1121-055-000 | R / TC | 30.00 | 0.5 | 0.4 / 0.7 | 4.00 / 5.00 | 15.0 |

M5-STYLI WITH RUBY BALL

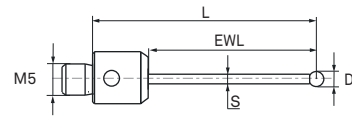
Stem: Ceramic



| Part No. | Material | L | D | S | EWL | W |
|-----------------|----------|--------|------|-----|--------|-------|
| 060-813.042-000 | R / CE | 90.00 | 8.0 | 6.0 | 72.00 | 22.5 |
| 060-813.041-000 | R / CE | 125.00 | 8.0 | 6.0 | 107.00 | 27.0 |
| M00-694-110-000 | R / CE | 250.00 | 10.0 | 7.0 | 225.00 | 66.2 |
| M00-694-111-000 | R / CE | 300.00 | 10.0 | 7.0 | 275.00 | 73.5 |
| M00-694-112-000 | R / CE | 350.00 | 10.0 | 7.0 | 325.00 | 81.2 |
| M00-694-113-000 | R / CE | 500.00 | 12.0 | 8.0 | 475.00 | 126.2 |

M5-STYLI WITH SILICON NITRIDE BALL

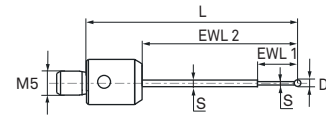
Stem: Tungsten Carbide



| Part No. | Material | L | D | S | EWL | W |
|------------------|----------|--------|-----|-----|--------|------|
| M00-694-126-000 | SN / TC | 30.00 | 2.0 | 1.5 | 19.00 | 9.9 |
| M00-1121-029-000 | SN / TC | 32.00 | 3.0 | 2.0 | 21.00 | 11.0 |
| M00-1121-023-000 | SN / TC | 33.50 | 3.0 | 2.0 | 22.50 | 11.0 |
| M00-694-120-000 | SN / TC | 35.00 | 3.0 | 2.0 | 24.00 | 10.4 |
| M00-1121-024-000 | SN / TC | 39.00 | 2.0 | 1.5 | 28.00 | 10.0 |
| M00-694-127-000 | SN / TC | 41.00 | 2.0 | 1.5 | 30.00 | 10.1 |
| M00-1121-035-000 | SN / TC | 48.50 | 3.0 | 2.0 | 37.50 | 11.5 |
| M00-694-121-000 | SN / TC | 50.00 | 3.0 | 2.0 | 39.00 | 11.1 |
| M00-694-132-000 | SN / TC | 55.00 | 4.0 | 2.5 | 44.00 | 12.7 |
| M00-1121-025-000 | SN / TC | 56.50 | 3.0 | 2.0 | 45.50 | 12.0 |
| M00-694-122-000 | SN / TC | 60.00 | 5.0 | 3.5 | 47.00 | 17.8 |
| M00-1121-027-000 | SN / TC | 62.00 | 4.0 | 2.0 | 51.00 | 12.0 |
| M00-1121-028-000 | SN / TC | 72.50 | 5.0 | 3.5 | 61.50 | 20.0 |
| M00-1121-022-000 | SN / TC | 78.00 | 4.0 | 2.5 | 67.00 | 12.5 |
| M00-694-133-000 | SN / TC | 80.00 | 4.0 | 2.5 | 59.00 | 14.3 |
| M00-694-123-000 | SN / TC | 80.00 | 5.0 | 3.5 | 67.00 | 20.8 |
| M00-694-142-000 | SN / TC | 80.00 | 5.0 | 3.5 | 67.00 | 21.3 |
| M00-694-124-000 | SN / TC | 90.00 | 8.0 | 6.0 | 72.00 | 46.6 |
| M00-1121-001-000 | SN / TC | 97.50 | 5.0 | 3.5 | 86.50 | 24.0 |
| M00-1121-019-000 | SN / TC | 98.50 | 3.0 | 2.0 | 87.50 | 13.5 |
| M00-1121-013-000 | SN / TC | 118.00 | 4.0 | 3.0 | 107.00 | 22.0 |
| M00-694-125-000 | SN / TC | 125.00 | 8.0 | 6.0 | 107.00 | 60.6 |
| M00-694-143-000 | SN / TC | 130.00 | 8.0 | 6.0 | 112.00 | 63.6 |
| M00-694-128-000 | SN / TC | 176.00 | 8.0 | 6.0 | 158.00 | 84.0 |

M5-STYLI WITH SILICON NITRIDE BALL

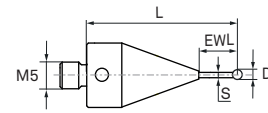
Stem: Tungsten Carbide (stepped)



| Part No. | Material | L | D | S | EWL 1/2 | W |
|------------------|----------|-------|-----|-----------|--------------|------|
| M00-1121-010-000 | SN / TC | 19.00 | 1.0 | 0.8 / 1.0 | 4.50 / 8.00 | 10.0 |
| M00-1121-036-000 | SN / TC | 29.50 | 1.0 | 0.8 / 1.0 | 4.50 / 18.50 | 9.5 |

M5-STYLUS WITH SILICON NITRIDE BALL

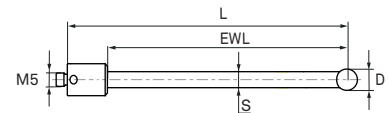
Stem: Tungsten Carbide



| Part No. | Material | L | D | S | EWL | W |
|-----------------|----------|-------|-----|-----|------|------|
| M00-694-131-000 | SN / TC | 28.00 | 1.5 | 1.0 | 7.00 | 10.4 |

M5-STYLUS WITH SILICON NITRIDE BALL

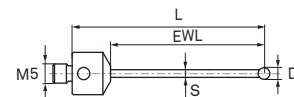
Stem: Ceramic



| Part No. | Material | L | D | S | EWL | W |
|-----------------|----------|--------|-----|-----|--------|------|
| M00-694-129-000 | SN / CE | 125.00 | 8.0 | 6.0 | 107.00 | 20.8 |

M5-STYLI WITH DIAMOND SPHERE

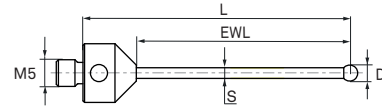
Stem: Tungsten Carbide



| Part No. | Material | L | D | S | EWL | W |
|-----------------|----------|-------|-----|-----|-------|---|
| M00-694-194-000 | DS / TC | 30.00 | 3.0 | 2.0 | 20.00 | - |
| M00-694-192-000 | DS / TC | 35.00 | 3.0 | 2.0 | 24.00 | - |
| M00-694-193-000 | DS / TC | 50.00 | 3.0 | 2.0 | 40.00 | - |
| M00-694-195-000 | DS / TC | 60.00 | 3.0 | 2.0 | 50.00 | - |

M5-STYLI WITH DIAMOND COATED SPHERE

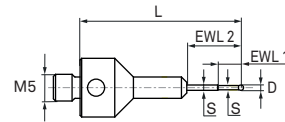
Stem: Tungsten Carbide



| Part No. | Material | L | D | S | EWL | W |
|-----------------|----------|-------|-----|-----|-------|---|
| M00-694-187-000 | DC / TC | 35.00 | 3.0 | 2.0 | 25.00 | - |
| M00-694-188-000 | DC / TC | 50.00 | 3.0 | 2.0 | 40.00 | - |
| M00-694-189-000 | DC / TC | 80.00 | 5.0 | 3.5 | 70.00 | - |
| M00-694-215-000 | DC / TC | 80.00 | 4.0 | 3.0 | 70.00 | - |

M5-STYLUS WITH DIAMOND COATED SPHERE

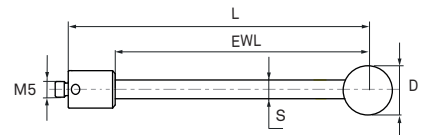
Stem: Tungsten Carbide (stepped)



| Part No. | Material | L | D | S | EWL 1/2 | W |
|-----------------|----------|-------|------|---------|--------------|---|
| M00-694-196-000 | DC / TC | 30.00 | 1.00 | 0.8 / 1 | 4.13 / 10.00 | - |

M5-STYLUS WITH CERAMIC BALL

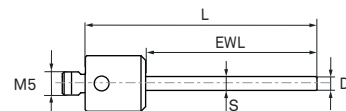
Stem: Ceramic



| Part No. | Material | L | D | S | EWL | W |
|-----------------|----------|-------|------|-----|-------|------|
| M00-694-186-000 | CE / CE | 90.00 | 15.0 | 6.0 | 72.00 | 28.6 |

M5-CYLINDER STYLUS

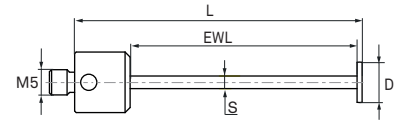
Stem: Tungsten Carbide



| Part No. | Material | L | D | S | EWL | W |
|-----------------|----------|-------|-----|-----|-------|------|
| 060-694.152-008 | TC | 50.00 | 3.0 | 3.0 | 37.00 | 15.1 |

M5-DISC STYLUS

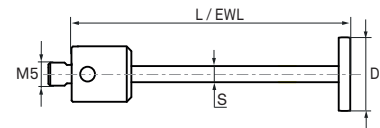
Disc: Ruby
Stem: Tungsten Carbide



| Part No. | Material | L | D | S | EWL | W |
|-----------------|----------|-------|-----|-----|-------|------|
| 060-694.152-011 | R / TC | 57.00 | 8.0 | 2.5 | 45.00 | 12.8 |

M5-DISC STYLUS

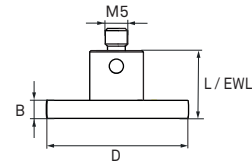
Disc: Ceramic
Stem: Tungsten Carbide



| Part No. | Material | L | D | S | EWL | W |
|-----------------|----------|-------|------|-----|-------|------|
| 060-694.152-012 | CE / TC | 60.50 | 16.0 | 3.5 | 60.50 | 19.9 |

M5-DISC STYLUS

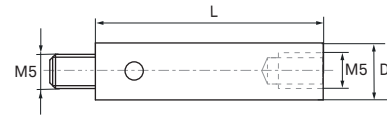
Disc: Ceramic



| Part No. | Material | L | D | B | EWL | W |
|-----------------|----------|-------|------|-----|-------|------|
| M00-694-152-014 | CE / SS | 15.20 | 35.0 | 4.0 | 15.20 | 25.0 |

M5-STYLUS EXTENSIONS

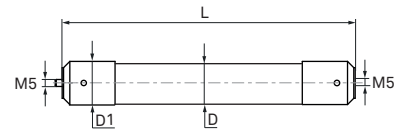
Material: Titanium



| Part No. | Material | L | D | D1 | W |
|------------------|----------|--------|------|----|------|
| 060-694.036-000 | TI | 20.00 | 12.0 | - | 9.4 |
| 060-694.035-000 | TI | 40.00 | 12.0 | - | 18.5 |
| 060-813.034-000 | TI | 50.00 | 12.0 | - | 15.8 |
| M00-1125-018-000 | TI | 60.00 | 12.0 | - | 30.0 |
| 060-813.033-000 | TI | 70.00 | 12.0 | - | 18.5 |
| M00-1125-010-000 | TI | 80.00 | 12.0 | - | 41.0 |
| 060-813.032-000 | TI | 100.00 | 12.0 | - | 23.5 |
| M00-1125-012-000 | TI | 120.00 | 12.0 | - | 61.0 |
| M00-1125-013-000 | TI | 150.00 | 12.0 | - | 77.0 |
| 060-694.037-000 | TI | 20.00 | 18.0 | - | 21.8 |
| M00-1125-014-000 | TI | 40.00 | 18.0 | - | 69.0 |
| 060-694.034-000 | TI | 60.00 | 18.0 | - | 35.6 |
| 060-694.033-000 | TI | 80.00 | 18.0 | - | 40.9 |
| 060-694.032-000 | TI | 100.00 | 18.0 | - | 46.3 |
| 060-694.031-000 | TI | 150.00 | 18.0 | - | 60.6 |
| 060-694.030-000 | TI | 200.00 | 18.0 | - | 73.3 |

M5-STYLUS EXTENSIONS

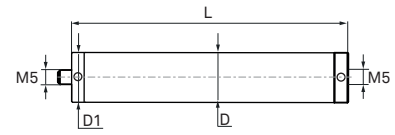
Stem: Carbon Fibre / End Pieces: Titanium or Stainless Steel



| Part No. | Material | L | D | D1 | W |
|------------------|----------|--------|------|------|-------|
| M00-1125-019-000 | CF / TI | 40.00 | 12.0 | 14.0 | 14.0 |
| M00-1125-023-000 | CF / TI | 50.00 | 12.0 | 14.0 | 14.0 |
| M00-1125-017-000 | CF / TI | 60.00 | 12.0 | 14.0 | 15.0 |
| M00-1125-015-000 | CF / TI | 80.00 | 12.0 | 14.0 | 16.0 |
| M00-1125-016-000 | CF / TI | 100.00 | 12.0 | 14.0 | 34.0 |
| M00-1125-004-000 | CF / TI | 120.00 | 12.0 | 14.0 | 18.0 |
| M00-1125-011-000 | CF / TI | 150.00 | 12.0 | 14.0 | 20.0 |
| M00-1125-021-000 | CF / TI | 180.00 | 12.0 | 14.0 | 21.0 |
| M00-1125-020-000 | CF / TI | 200.00 | 12.0 | 14.0 | 22.0 |
| M00-1125-022-000 | CF / TI | 250.00 | 12.0 | 14.0 | 24.0 |
| M00-694-163-000 | CF / SS | 300.00 | 29.0 | 31.0 | 156.7 |
| M00-694-164-000 | CF / SS | 400.00 | 29.0 | 31.0 | 184.9 |
| M00-694-165-000 | CF / SS | 500.00 | 29.0 | 31.0 | 203.6 |
| M00-694-168-000 | CF / SS | 800.00 | 29.0 | 31.0 | 438.0 |

M5-STYLUS EXTENSIONS

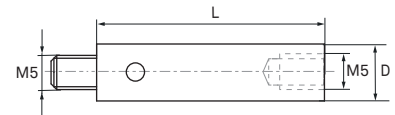
Stem: Carbon Fibre
End Pieces: Titanium



| Part No. | Material | L | D | D1 | W |
|-----------------|----------|--------|------|------|------|
| M00-694-038-000 | CF / TI | 60.00 | 18.0 | 18.0 | 37.0 |
| M00-694-040-000 | CF / TI | 80.00 | 18.0 | 18.0 | 40.2 |
| M00-694-041-000 | CF / TI | 100.00 | 18.0 | 18.0 | 43.8 |
| M00-694-042-000 | CF / TI | 200.00 | 18.0 | 18.0 | 60.3 |
| M00-694-043-000 | CF / TI | 300.00 | 18.0 | 18.0 | 80.0 |

M5-STYLUS EXTENSION

Material: Dispal®



| Part No. | Material | L | D | D1 | W |
|------------------|----------|-------|------|----|------|
| M00-1125-024-000 | DA | 60.00 | 12.0 | - | 19.0 |

M5-CUBES

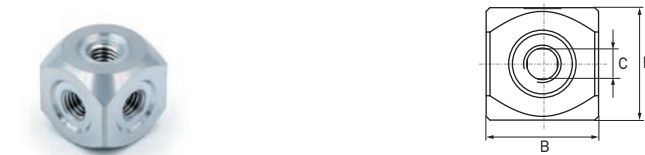
Material: Dispal®



| Part No. | Material | L | B | C | W |
|-----------------|----------|-------|------|--------|------|
| 060-694.016-000 | DA | 15.00 | 15.0 | 5 x M5 | 11.4 |
| 060-684.044-000 | DA | 20.00 | 20.0 | 5 x M5 | 19.1 |

M5-CUBE FOR HP-S-X3

Material: Dispal®



| Part No. | Material | L | B | C | W |
|-----------------|----------|-------|------|--------|-----|
| M00-114-101-000 | DA | 15.00 | 15.0 | 5 x M5 | 9.0 |

M5-DOUBLE CUBE

Material: Dispal®



| Part No. | Material | L | B | C | W |
|------------------|----------|-------|------|--------|------|
| M00-1126-009-000 | DA | 40.00 | 20.0 | 9 x M5 | 66.0 |

M5-STYLUS KNUCKLES

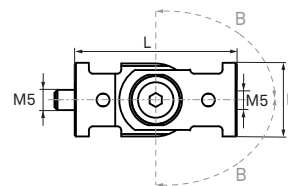
Material: Titanium



| Part No. | Material | L | D | B | W |
|------------------|----------|-------|------|------------|------|
| M00-1126-005-000 | TI | 30.00 | 12.0 | ± 90° | 15.5 |
| 060-813.051-000 | TI | 34.00 | 12.0 | ± 90° | 21.5 |
| M00-1126-002-000 | TI | 51.00 | 12.0 | 180°/ 360° | 26.0 |

M5-STYLUS KNUCKLE

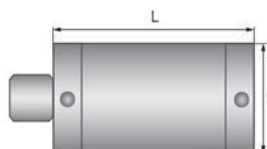
Material: Dispal®



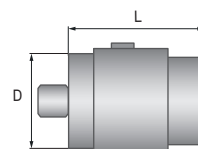
| Part No. | Material | L | D | B | W |
|-----------------|----------|-------|------|-------|------|
| M00-694-010-000 | DA | 40.00 | 18.0 | ± 90° | 26.5 |

M5-STYLUS ROTARY JOINTS

Material: Stainless Steel



060-813.055-000

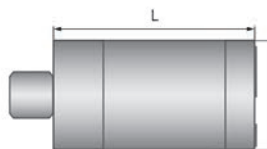


060-694.013-000

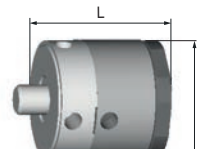
| Part No. | Material | L | D | B | W |
|-----------------|----------|-------|------|---|------|
| 060-813.055-000 | SS | 27.00 | 14.0 | | 26.0 |
| 060-694.013-000 | SS | 27.00 | 20.0 | | 48.4 |

M5-STYLUS ROTARY JOINTS

Material: Titanium



M00-1126-003-000

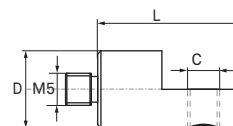


M00-114-102-000

| Part No. | Material | L | D | B | W |
|------------------|----------|-------|------|---|------|
| M00-114-102-000 | TI | 20.00 | 20.0 | | 28.2 |
| M00-1126-003-000 | TI | 30.00 | 12.0 | | 15.5 |

M5-STYLUS ANGLE 90°

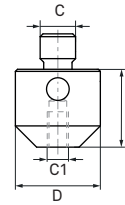
Material: Titanium



| Part No. | Material | L | D | C | C1 | W |
|------------------|----------|-------|------|----|----|-----|
| M00-1126-004-000 | TI | 22.50 | 12.0 | M5 | - | 9.0 |

M5/M2-STYLUS ADAPTER

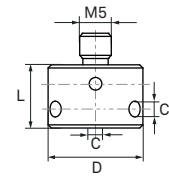
Material: Stainless Steel



| Part No. | Material | L | D | C | C1 | W |
|------------------|----------|-------|------|----|----|-----|
| M00-1126-006-000 | SS | 11.00 | 12.0 | M5 | M2 | 9.0 |
| M00-694-018-000 | SS | 11.00 | 12.0 | M5 | M3 | - |

M5-STYLUS STAR HOLDERS

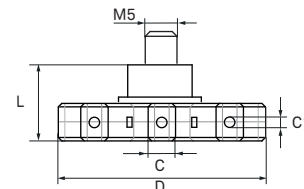
Material: Titanium



| Part No. | Material | L | D | C | C1 | W |
|-----------------|----------|-------|------|----|--------|-----|
| 060-694.060-000 | TI | 10.00 | 15.0 | D2 | 4 x D2 | 8.1 |
| M00-694-061-000 | TI | 12.00 | 15.0 | M5 | 4 x D2 | 8.0 |
| M00-694-090-000 | TI | 10.00 | 15.0 | D2 | 3 x D2 | 8.3 |

M5-STYLUS STAR HOLDER

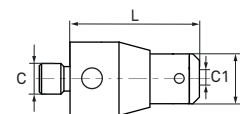
Material: Dispal®



| Part No. | Material | L | D | C | C1 | W |
|-----------------|----------|-------|------|----|--------|------|
| M00-694-091-000 | DA | 12.00 | 45.0 | M5 | 8 x D2 | 20.7 |

M5-STYLUS HOLDER

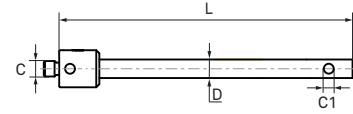
Material: Titanium



| Part No. | Material | L | D | C | C1 | W |
|-----------------|----------|-------|-----|----|----|-----|
| M00-694-068-000 | TI | 21.00 | 8.0 | M5 | D2 | 8.2 |

M5-STYLUS HOLDER 90°

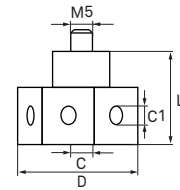
Material: Stainless Steel



| Part No. | Material | L | D | C | C1 | W |
|-----------------|----------|-------|-----|----|----|------|
| M00-694-069-000 | SS | 95.00 | 6.0 | M5 | D2 | 21.7 |

M5-STYLUS STAR HOLDERS

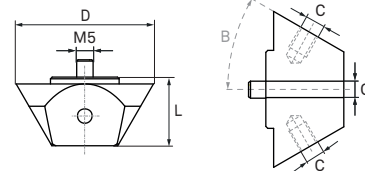
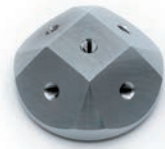
Material: Titanium



| Part No. | Material | L | D | C | C1 | W |
|-----------------|----------|-------|------|----|-------------|-------|
| M00-694-081-000 | TI | 21.00 | 32.0 | M5 | 5 x M5 | 37.3 |
| M00-694-083-000 | TI | 21.00 | 29.0 | M5 | 7 x M5 | 34.2 |
| M00-694-084-000 | TI | 21.00 | 43.4 | M5 | 8xD2 / 8xM5 | 78.8 |
| M00-694-082-000 | TI | 21.00 | 44.0 | M5 | 6xD2 / 6xM5 | 77.4 |
| M00-694-085-000 | TI | 17.00 | 87.6 | M5 | 8 x D2 | 142.7 |

M5-STYLUS HOLDERS 15° - 75°

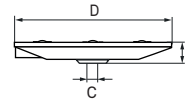
Material: Dispal® or Titanium



| Part No. | Material | L | D | B | C | W |
|-----------------|----------|-------|------|-----|--------|-------|
| M00-694-102-000 | DA | 22.00 | 35.0 | 15° | 5 x M5 | 46.1 |
| M00-694-098-000 | DA | 20.00 | 40.0 | 30° | 5 x M5 | 43.2 |
| M00-694-097-000 | DA | 25.00 | 50.0 | 30° | 7 x M5 | 77.4 |
| M00-694-106-000 | DA | 19.00 | 47.5 | 45° | 5 x M5 | 53.7 |
| M00-694-099-000 | DA | 19.00 | 47.5 | 45° | 5 x M5 | 55.2 |
| M00-694-104-000 | DA | 20.00 | 50.0 | 45° | 7 x M5 | 57.2 |
| M00-694-100-000 | DA | 19.00 | 52.5 | 60° | 5 x M5 | 72.5 |
| M00-694-096-000 | DA | 18.00 | 56.0 | 60° | 7 x M5 | 76.6 |
| M00-694-103-000 | DA | 18.00 | 65.0 | 75° | 7 x M5 | 117.6 |
| M00-694-086-000 | TI | 20.00 | 42.0 | 30° | 9 x M5 | 58.2 |

HP-S-X3 STYLUS CLAMPING

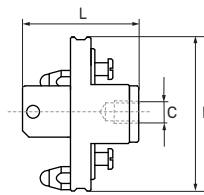
Material: Aluminium



| Part No. | Material | L | D | C | W |
|-----------------|----------|-------|------|----|------|
| M00-114-100-000 | AL | 12.50 | 53.0 | M5 | 40.2 |

HP-S-X5/LSP-S2/S4 STYLUS CLAMPING

Material: Aluminium



| Part No. | Material | L | D | C | W |
|-----------------|----------|-------|------|----|-------|
| M00-813-101-000 | AL | 15.00 | 60.0 | M5 | 126.2 |

MTK 1 STYLUS CLAMPING

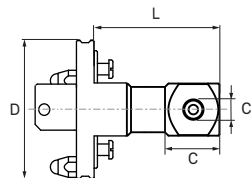
Material: Aluminium



| Part No. | Material | L | D | C | W |
|-----------------|----------|-------|------|----|-------|
| 060-684.026-000 | AL | 33.00 | 62.0 | M5 | 148.0 |

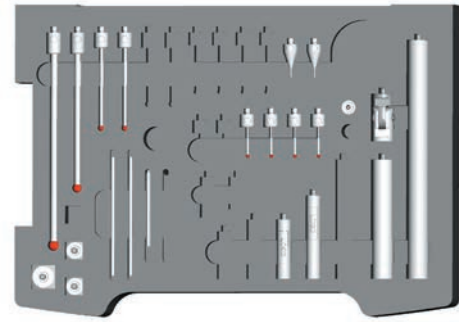
HP-S-X5/LSP-S2/S4 STYLUS CLAMPINGS WITH CUBE

Clamping Material: Aluminium



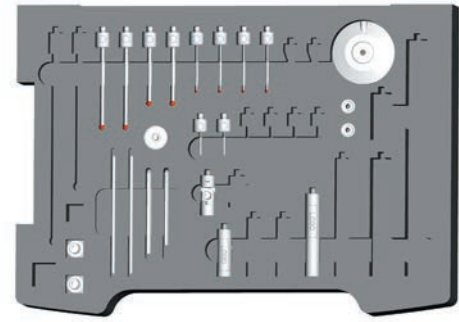
| Part No. | Material | L | D | C | C1 | W |
|-----------------|----------|--------|------|-------------|--------|-------|
| M00-813-117-000 | AL / DA | 118.50 | 60.0 | 23.0 x 23.0 | 5 x M5 | 246.0 |
| M00-813-119-000 | AL / AL | 60.00 | 60.0 | 23.0 x 23.0 | 5 x M5 | 155.9 |
| M00-813-111-000 | AL / TI | 60.00 | 60.0 | 23.0 x 23.0 | 5 x M5 | 226.8 |

M5-STYLUS KIT STANDARD



| Part No. | Item Description | Contents | QTY |
|-----------------|---------------------------------------|-----------------|-----|
| M00-694-006-000 | M5-Stylus Kit Standard | | |
| | M5-Stylus (R-1.5-TC-1-L28) | M00-694-150-016 | 2 |
| | M5-Stylus (R-3-TC-2-L35) | 060-694.050-000 | 4 |
| | M5-Stylus (R-5-TC-3.5-L80) | 060-694.054-000 | 2 |
| | M5-Stylus (R-8-TC-6-L130) | M00-694-138-000 | 1 |
| | M5-Stylus (R-8-TC-6-L176) | 060-694.150-014 | 1 |
| | M5-Stylus Extension (TI-12-L20) | 060-694.036-000 | 1 |
| | M5-Stylus Extension (TI-12-L50) | 060-813.034-000 | 1 |
| | M5-Stylus Extension (TI-12-L70) | 060-813.033-000 | 1 |
| | M5-Stylus Extension (TI-18-L100) | 060-694.032-000 | 1 |
| | M5-Stylus Extension (TI-18-L200) | 060-694.030-000 | 1 |
| | M5-Cube 15x15 (DA) | 060-694.016-000 | 2 |
| | M5-Cube 20x20 (DA) | 060-684.044-000 | 1 |
| | M5-Stylus Knuckle DEG 180 (DA-18-L40) | M00-694-010-000 | 1 |
| | Mounting Pin (SV-3-L100) | 060-694.021-011 | 2 |
| | Hexagon Socket Screw Key AF3 mm | M02-B04-703-100 | 1 |
| | Storage Box | | 1 |

M5-STYLUS KIT FOR HP-S-X3C SENSOR



| Part No. | Item Description | Contents | QTY |
|-----------------|---------------------------------------|-----------------|-----|
| M00-694-007-000 | M5-Stylus Kit for HP-S-X3C Sensor | | |
| | HP-S-X3 Stylus Clamping (1x M5) | M00-114-100-000 | 1 |
| | M5-Stylus (R-2-TC-1.5-L30) | 060-694.150-007 | 2 |
| | M5-Stylus (R-3-TC-2-L50) | 060-694.051-000 | 4 |
| | M5-Stylus (R-5-TC-3.5-L60) | 060-694.053-000 | 2 |
| | M5-Stylus (R-5-TC-3.5-L80) | 060-694.054-000 | 2 |
| | M5-Stylus Extension (TI-12-L20) | 060-694.036-000 | 2 |
| | M5-Stylus Extension (TI-12-L40) | 060-694.035-000 | 1 |
| | M5-Stylus Extension (TI-12-L70) | 060-813.033-000 | 1 |
| | M5-Rotary Joint (TI-20-L20) | M00-114-102-000 | 1 |
| | M5-Stylus Knuckle DEG 180 (TI-12-L34) | 060-813.051-000 | 1 |
| | M5-Cube 15x15 (DA) for HP-S-X3 | M00-114-101-000 | 2 |
| | Mounting Pin (SV-3-L100) | 060-694.021-011 | 2 |
| | Hexagon Socket Screw Key AF3 mm | M02-B04-703-100 | 1 |
| | Hexagon Socket Screw Key AF4 mm | M02-B04-703-101 | 1 |
| | Storage Box | | 1 |



| Part No. | Item Description |
|-----------------|--------------------------|
| 060-694.021-011 | Mounting Pin (SV-3-L100) |



| Part No. | Item Description |
|-----------------|------------------------------------|
| M00-114-006-130 | Mounting Key AF4.1/3.6 mm (SS-L30) |



| Part No. | Item Description |
|-----------------|---|
| M02-B04-000-041 | Torque Screwdriver 0.5 NM with Hexagon AF2.5 mm |



| Part No. | Item Description |
|-----------------|---------------------------------|
| M02-B04-703-100 | Hexagon Socket Screw Key AF3 mm |



| Part No. | Item Description |
|-----------------|---------------------------------|
| M02-B04-703-101 | Hexagon Socket Screw Key AF4 mm |



| Part No. | Item Description |
|-----------------|-----------------------------------|
| M02-B04-703-097 | Hexagon Socket Screw Key AF1.5 mm |



| Part No. | Item Description |
|-----------------|------------------|
| M00-114-006-140 | Mounting Pin |



| Part No. | Item Description |
|-----------------|-------------------------------|
| M02-B04-000-035 | Hexagon screw driver AF1.5 mm |

CROSS REFERENCE NUMBERS
SCANNING STYLI AND ACCESSORIES

| ITP Part No. | Hexagon Part No. | Item Description |
|--------------------|------------------|--|
| DG M5 000 11 051 | M00-1126-002-000 | M5-Stylus Knuckle DEG 180/360 (TI-12-L51) |
| DS M5 000 14 027 | 060-813.055-000 | M5-Rotary Joint (SS-14-L27) |
| DT M5 000 11 029 | M00-1126-003-000 | M5-Rotary Joint (TI-12-L30) |
| DT M5 000 18 030 | 060-694.013-000 | M5-Rotary Joint (SS-20-L27) |
| FH M5 015 11 044 | M00-1121-041-000 | M5-Stylus - Steped (R-1.5-TC-1/4-L43.25) |
| FH M5 020 11 058 | M00-1121-042-000 | M5-Stylus - Steped (R-2-TC-1.5/4-L57) |
| FH M5 020 12 066 | 060-694.150-006 | M5-Stylus - Stepedt (R-2-TC-1.5/4-L66) |
| GT M5 000 11 030 | M00-1126-005-000 | M5-Stylus Knuckle DEG 0-90 (TI-12-L30) |
| GT M5 000 12 034 | 060-813.051-000 | M5-Stylus Knuckle DEG 180 (TI-12-L34) |
| GT M5 000 18 040 | M00-694-010-000 | M5-Stylus Knuckle DEG 180 (DA-18-L40) |
| KH M5 000 11 022 | M00-1126-004-000 | M5-Stylus Angle DEG 90DEG 90 (TI-12-L22.5) |
| KH M5 000 12 021 | M00-694-068-000 | M5-Stylus Holde (1x D2) |
| KH M5 080 12 056 | 060-694.152-011 | M5-Disc Stylus (R-8-TC-2.5-L57) |
| KH M5 160 12 057 | 060-694.152-012 | M5-Disc Stylus (CE-16-TC-3.5-L60.5) |
| KH M5 L06 13 021 | M00-694-082-000 | M5-Taststift Star Holder (6x D2 / 6x M5 / 1x M5) |
| KH M5 L07 13 021 | M00-694-083-000 | M5-Stylus Star Holder r (7x M5 M5) |
| KH M5 L08 13 021 | M00-694-084-000 | M5-Stylus Star Holder (8x M5/ 8x D2/ 1x M5) |
| KT M5 003 02 022 | M00-694-067-005 | D2-Stylus - Tapered (R-0.3-TC-0.2/2-L22) |
| KT M5 005 02 022 | M00-694-064-005 | D2-Stylus - Tapered (R-0.5-TC-0.3/2-L22) |
| KT M5 008 02 022 | M00-694-063-005 | D2-Stylus - Tapered (R-0.8-TC-0.6/2-L22) |
| KT M5 010 02 022 | M00-694-062-005 | D2-Stylus - Tapered (R-1-TC-0.8/2-L22) |
| KT M5 015 02 022 | 060-694.066-000 | D2-Stylus - Stepped (R-1.5-TC-1.2/2-L22) |
| KT M5 020 02 022 | 060-694.065-000 | D2-Stylus - Stepped (R-2-TC-1.5/2-L22) |
| NH M5 005 11 022 | M00-1121-058-000 | D2-Stylus - Stepped (R-0.5-TC-0.3/1-L21.75) |
| Q TH M5 S30 11 100 | M00-1121-019-000 | M5-Stylus (SN-3-TC-2-L98.5) |
| Q TH M5 S40 11 080 | M00-1121-022-000 | M5-Stylus (SN-4-TC-2.5-L78) |
| RI M3 000 04 005 | M00-1126-011-000 | M3/M2-Stylus Adapter (SS-4-L5) |
| RT M5 200 11 010 | M00-1126-006-000 | M5/M2-Stylus Adapter (SS-12-L11) |
| SHI M3 090 06 032 | M00-1126-001-000 | M3-Cube with extension (SS-9X9-L32.5) |
| STH M3 020 04 041 | M00-1121-026-000 | M3-Stylus - Stepped (R-2-TC-1/2-L39.5) |
| S TH M5 010 11 015 | M00-1121-011-000 | M5-Stylus (R-1-TC-0.8-L14.5) |
| STH M5 030 11 100 | M00-1121-017-000 | M5-Stylus (R-3-TC-2-L98.5) |
| STH M5 S40 11 120 | M00-1121-013-000 | M5-Stylus (SN-4-TC-3-L118) |

| ITP Part No. | Hexagon Part No. | Item Description |
|------------------|------------------|---|
| TH M3 050 04 052 | M00-694-221-000 | M3-Stylus (R-5-SS-3-L50) |
| TH M5 005 10 030 | M00-1121-055-000 | M5-Stylus - Stepped (R-0.5-TC-0.4/0.7-L30) |
| TH M5 007 10 030 | M00-1121-056-000 | M5-Stylus (R-0.7-TC-0.5-L30) |
| TH M5 010 11 030 | M00-1121-045-000 | M5-Stylus - Stepped (R-1-TC-0.8/1.0-L29.5) |
| TH M5 015 11 030 | M00-1121-043-000 | M5-Stylus - Stepped (R-1.5-TC-1/1.5-L29.25) |
| TH M5 015 12 028 | M00-694-150-016 | M5-Stylus (R-1.5-TC-1-L28) |
| TH M5 020 11 030 | M00-1121-046-000 | M5-Stylus (R-2-TC-1.5-L29) |
| TH M5 020 11 040 | M00-1121-047-000 | M5-Stylus (R-2-TC-1.5-L39) |
| TH M5 020 12 030 | 060-694.150-007 | M5-Stylus (R-2-TC-1.5-L30) |
| TH M5 020 12 041 | 060-694.150-013 | M5-Stylus (R-2-TC-1.5-L41) |
| TH M5 030 11 025 | M00-1121-048-000 | M5-Stylus (R-3-TC-2-L23.5) |
| TH M5 030 11 033 | M00-1121-049-000 | M5-Stylus (R-3-TC-2-L32) |
| TH M5 030 11 050 | M00-1121-050-000 | M5-Stylus (R-3-TC-2-L48.5) |
| TH M5 030 11 058 | M00-1121-051-000 | M5-Stylus (R-3-TC-2-L56.5) |
| TH M5 030 12 035 | 060-694.050-000 | M5-Stylus (R-3-TC-2-L35) |
| TH M5 030 12 050 | 060-694.051-000 | M5-Stylus (R-3-TC-2-L50) |
| TH M5 035 11 100 | M00-1121-044-000 | M5-Stylus (R-3.5-TC-2.5-L98.25) |
| TH M5 040 11 064 | M00-1121-052-000 | M5-Stylus (R-4-TC-2-L62) |
| TH M5 040 12 055 | M00-694-150-017 | M5-Stylus (R-4-TC-2.5-L55) |
| TH M5 040 12 080 | M00-694-150-018 | M5-Stylus (R-4-TC-2.5-L80) |
| TH M5 050 11 075 | M00-1121-053-000 | M5-Stylus (R-5-TC-3.5-L72.5) |
| TH M5 050 11 100 | M00-1121-054-000 | M5-Stylus (R-5-TC-3.5-L97.5) |
| TH M5 050 12 060 | 060-694.053-000 | M5-Stylus (R-5-TC-3.5-L60) |
| TH M5 050 12 080 | 060-694.054-000 | M5-Stylus (R-5-TC-3.5-L80) |
| TH M5 080 12 090 | 060-694.056-000 | M5-Stylus (R-8-TC-6-L90) |
| TH M5 080 12 176 | 060-694.150-014 | M5-Stylus (R-8-TC-6-L176) |
| TH M5 S10 11 020 | M00-1121-010-000 | M5-Stylus - Stepped (SN-1-TC-0.8/1-L19) |
| TH M5 S10 11 030 | M00-1121-036-000 | M5-Stylus (SN-1-TC-0.8/1-L29.5) |
| TH M5 S15 12 028 | M00-694-131-000 | M5-Stylus (SN-1.5-TC-1-L28) |
| TH M5 S20 11 040 | M00-1121-024-000 | M5-Stylus (SN-2-TC-1.5-L39) |
| TH M5 S20 12 030 | M00-694-126-000 | M5-Stylus (SN-2-TC-1.5-L30) |
| TH M5 S30 11 033 | M00-1121-029-000 | M5-Stylus (SN-3-TC-2-L32) |
| TH M5 S30 11 035 | M00-1121-023-000 | M5-Stylus (SN-3-TC-2-L33.5) |

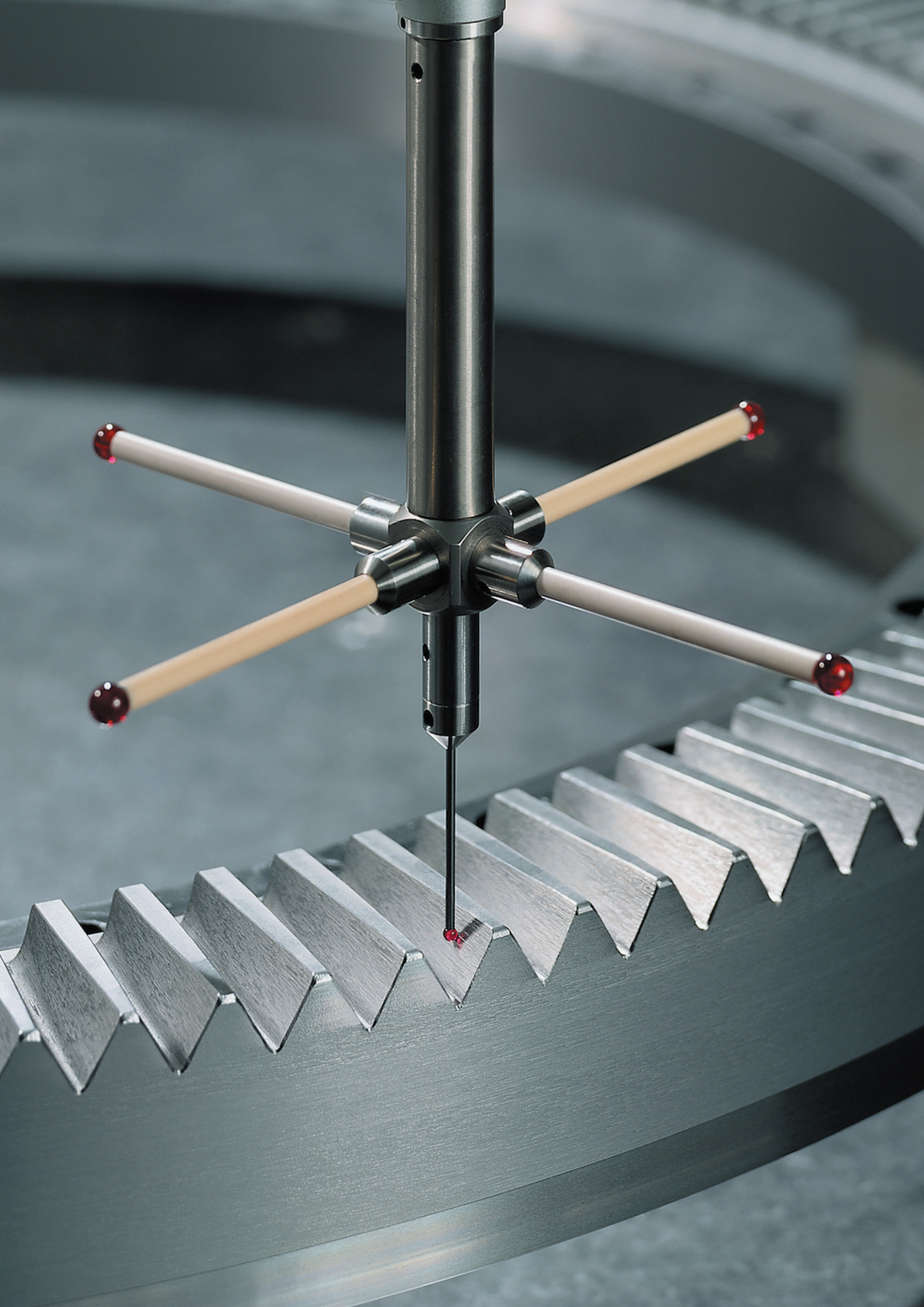
CROSS REFERENCE NUMBERS

SCANNING STYLI AND ACCESSORIES

| ITP Part No. | Hexagon Part No. | Item Description |
|------------------|------------------|--|
| TH M5 S30 11 050 | M00-1121-035-000 | M5-Stylus (SN-3-TC-2-L48.5) |
| TH M5 S30 11 058 | M00-1121-025-000 | M5-Stylus (SN-3-TC-2-L56.5) |
| TH M5 S30 12 050 | M00-694-121-000 | M5-Stylus (SN-3-TC-2-L50) |
| TH M5 S40 11 064 | M00-1121-027-000 | M5-Stylus (SN-4-TC-2-L62) |
| TH M5 S40 12 055 | M00-694-132-000 | M5-Stylus (SN-4-TC-2.5-L55) |
| TH M5 S40 12 080 | M00-694-133-000 | M5-Stylus (SN-4-TC-2.5-L80) |
| TH M5 S50 11 075 | M00-1121-028-000 | M5-Stylus (SN-5-TC-3.5-L72.5) |
| TH M5 S50 11 100 | M00-1121-001-000 | M5-Stylus (SN-5-TC-3.5-L97.5) |
| TH M5 S50 12 060 | M00-694-122-000 | M5-Stylus (SN-5-TC-3.5-L60) |
| TH M5 S50 12 080 | M00-694-123-000 | M5-Stylus (SN-5-TC-3.5-L80) |
| TH M5 S80 12 125 | M00-694-125-000 | M5-Stylus (SN-8-TC-6-L125) |
| TK M5 080 12 125 | 060-813.041-000 | M5-Stylus (R-8-CE-6-L125) |
| TK M5 150 12 090 | M00-694-186-000 | M5-Stylus (CE-15-CE-6-L90) |
| VA M5 000 11 060 | M00-1125-024-000 | M5-Stylus Extension (DA-12-L60) |
| VC M3 000 05 050 | M00-694-245-000 | M3-Stylus Extension (CF-5-DA-5.5-L50) |
| VC M3 000 05 150 | M00-694-248-000 | M3-Stylus Extension (CF-5-DA-5.5-L150) |
| VC M5 TZ0 11 040 | M00-1125-019-000 | M5-Stylus Extension (CF-12-TI-14-L40) |
| VC M5 TZ0 11 050 | M00-1125-023-000 | M5-Stylus Extension (CF-12-TI-14-L50) |
| VC M5 TZ0 11 060 | M00-1125-017-000 | M5-Stylus Extension (CF-12-TI-14-L60) |
| VC M5 TZ0 11 080 | M00-1125-015-000 | M5-Stylus Extension (CF-12-TI-14-L80) |
| VC M5 TZ0 11 100 | M00-1125-016-000 | M5-Stylus Extension (CF-12-TI-14-L100) |
| VC M5 TZ0 11 120 | M00-1125-004-000 | M5-Stylus Extension (CF-12-TI-14-L120) |
| VC M5 TZ0 11 150 | M00-1125-011-000 | M5-Stylus Extension (CF-12-TI-14-L150) |
| VC M5 TZ0 11 180 | M00-1125-020-000 | M5-Stylus Extension (CF-12-TI-14-L180) |
| VC M5 TZ0 11 200 | M00-1125-021-000 | M5-Stylus Extension (CF-12-TI-14-L200) |
| VC M5 TZ0 11 250 | M00-1125-022-000 | M5-Stylus Extension (CF-12-TI-14-L250) |
| VC M5 TZ0 20 060 | M00-694-038-000 | M5-Stylus Extension (CF-18-TI-18-L60) |
| VC M5 TZ0 20 100 | M00-694-041-000 | M5-Stylus Extension (CF-18-TI-18-L100) |
| VC M5 TZ0 20 200 | M00-694-042-000 | M5-Stylus Extension (CF-18-TI-18-L200) |
| VC M5 TZ0 20 300 | M00-694-043-000 | M5-Stylus Extension (CF-18-TI-18-L300) |
| VC M5 TZ0 20 400 | M00-694-164-000 | M5-Stylus Extension (CF-29-SS-31-L400) |
| VC M5 TZ0 20 500 | M00-694-165-000 | M5-Stylus Extension (CF-29-SS-31-L500) |

| ITP Part No. | Hexagon Part No. | Item Description |
|------------------|------------------|----------------------------------|
| VT M5 000 11 060 | M00-1125-018-000 | M5-Stylus Extension (TI-12-L60) |
| VT M5 000 11 080 | M00-1125-010-000 | M5-Stylus Extension (TI-12-L80) |
| VT M5 000 11 120 | M00-1125-012-000 | M5-Stylus Extension (TI-12-L120) |
| VT M5 000 11 150 | M00-1125-013-000 | M5-Stylus Extension (TI-12-L150) |
| VT M5 000 12 020 | 060-694.036-000 | M5-Stylus Extension (TI-12-L20) |
| VT M5 000 12 040 | 060-694.035-000 | M5-Stylus Extension (TI-12-L40) |
| VT M5 000 12 050 | 060-813.034-000 | M5-Stylus Extension (TI-12-L50) |
| VT M5 000 12 070 | 060-813.033-000 | M5-Stylus Extension (TI-12-L70) |
| VT M5 000 12 100 | 060-813.032-000 | M5-Stylus Extension (TI-12-L100) |
| VT M5 000 18 020 | 060-694.037-000 | M5-Stylus Extension (TI-18-L20) |
| VT M5 000 18 040 | M00-1125-014-000 | M5-Stylus Extension (TI-18-L40) |
| VT M5 000 18 060 | 060-694.034-000 | M5-Stylus Extension (TI-18-L60) |
| VT M5 000 18 080 | 060-694.033-000 | M5-Stylus Extension (TI-18-L80) |
| VT M5 000 18 100 | 060-694.032-000 | M5-Stylus Extension (TI-18-L100) |
| VT M5 000 18 150 | 060-694.031-000 | M5-Stylus Extension (TI-18-L150) |
| VT M5 000 18 200 | 060-694.030-000 | M5-Stylus Extension (TI-18-L200) |
| WA M5 000 15 000 | M00-114-101-000 | M5-Cube 15x15 (DA) for HP-S-X3 |
| WT M3 000 05 013 | M00-694-243-000 | M3-Cube 13x13 mm (5x M3) (DA) |
| WT M5 000 20 040 | M00-1126-009-000 | M5-Double Cube 20X20 (DA-L40) |
| WT M5 L00 15 000 | 060-694.016-000 | M5-Cube 15x15 (DA) |
| WT M5 L00 20 000 | 060-684.044-000 | M5-Cube 20x20 (DA) |

| Renishaw Part No. | Hexagon Part No. | Item Description |
|-------------------|------------------|---|
| A-5003-0069 | M00-1121-020-000 | M3-Stylus (R-5-CE-2.5-L50) |
| A-5003-4686 | M00-1125-002-000 | M3-Rotary Stylus Knuckle (SS-L17) |
| A-5003-4862 | M00-694-241-000 | M3-Stylus (R-8-CF-5-L75) |
| A-5003-4863 | M00-694-231-000 | M3-Stylus (R-8-CF-5-L100) |
| A-5003-5204 | M00-1121-002-000 | M5-Stylus (R-1-TC-0.7-L20) |
| A-5003-5208 | M00-1121-003-000 | M5-Stylus (R-3-TC-2-L20) |
| A-5003-5216 | 060-694.150-007 | M5-Stylus (R-2-TC-1.5-L30) |
| A-5003-5218 | M00-1121-004-000 | M5-Stylus (R-3-TC-2-L30) |
| A-5003-5221 | M02-J01-100-001 | M5-Stylus (R-1.5-TC-1-L40) |
| A-5003-5234 | 060-694.051-000 | M5-Stylus (R-3-TC-2-L50) |
| A-5003-5249 | 060-694.054-000 | M5-Stylus (R-5-TC-3.5-L80) |
| A-5003-5278 | 060-813.051-000 | M5-Stylus Knuckle DEG 0-90 (TI-12-L34) |
| A-5004-7596 | M00-1126-012-000 | M4/M3-Stylus Adapter (SS-4.5-L20) |
| A-5555-0189 | 060-694.016-000 | M5-Cube 15x15 (DA) |
| A-5555-0190 | 060-684.044-000 | M5-Cube 20x20 (DA) |
| A-5555-0226 | M00-1126-006-000 | M5/M2-Stylus Adapter (SS-12-L11) |
| A-5555-0227 | M00-694-018-000 | M5/M3-Stylus Adapter (SS-12-L11) |
| A-5555-0425 | M00-1125-004-000 | M5-Stylus Extension (CF-12-TI-14-L120) |
| A-5555-0658 | M00-694-038-000 | M5-Stylus Extension (CF-18-TI-18-L60) |
| A-5555-0661 | M00-694-041-000 | M5-Stylus Extension (CF-18-TI-18-L100) |
| A-5555-0663 | M00-694-042-000 | M5-Stylus Extension (CF-18-TI-18-L200) |
| A-5555-0664 | M00-694-043-000 | M5-Stylus Extension (CF-18-TI-18-L300) |
| A-5555-0665 | M00-694-164-000 | M5-Stylus Extension (CF-29-SS-31-L400) |
| A-5555-0667 | M00-694-165-000 | M5-Stylus Extension (CF-29-SS-31-L500) |



ООО «Ремстанмаш»

г. Смоленск, Верхне-Сенная, д.4, офис 401.

сайт: www.cnchelp.ru

Email: info@cnchelp.ru

Тел: 8-800-511-02-67

Тел: +7(499)704-02-67

Тел: 8-919-046-48-46